

CBRE

FOR LEASE
MEDICAL & OFFICE



MEDICAL & OFFICE SPACE

23600 COMMERCE PARK ROAD, BEACHWOOD, OH 44122

PROPERTY HIGHLIGHTS

- ◆ Turnkey office spaces totaling 12,263 SF available
 - ◆ Suite A: 7,263 SF | Suite B: 5,000 SF
- ◆ Direct access to suites with an employee only entrance and a separate patient entrance
- ◆ Key card entry security to waiting room and reception desk
- ◆ Layout highly conducive for medical office conversion
- ◆ Monument signage opportunity
- ◆ Over 60 parking spaces
- ◆ Medical co-tenancy and multiple medical centers nearby including UH Beachwood Medical Center, UH Ahuja Medical Center and many other healthcare practices
- ◆ Highly accessible location — less than a mile (3 minutes) from I-271
- ◆ Rate: \$16/SF (NNN)

Front Entrance



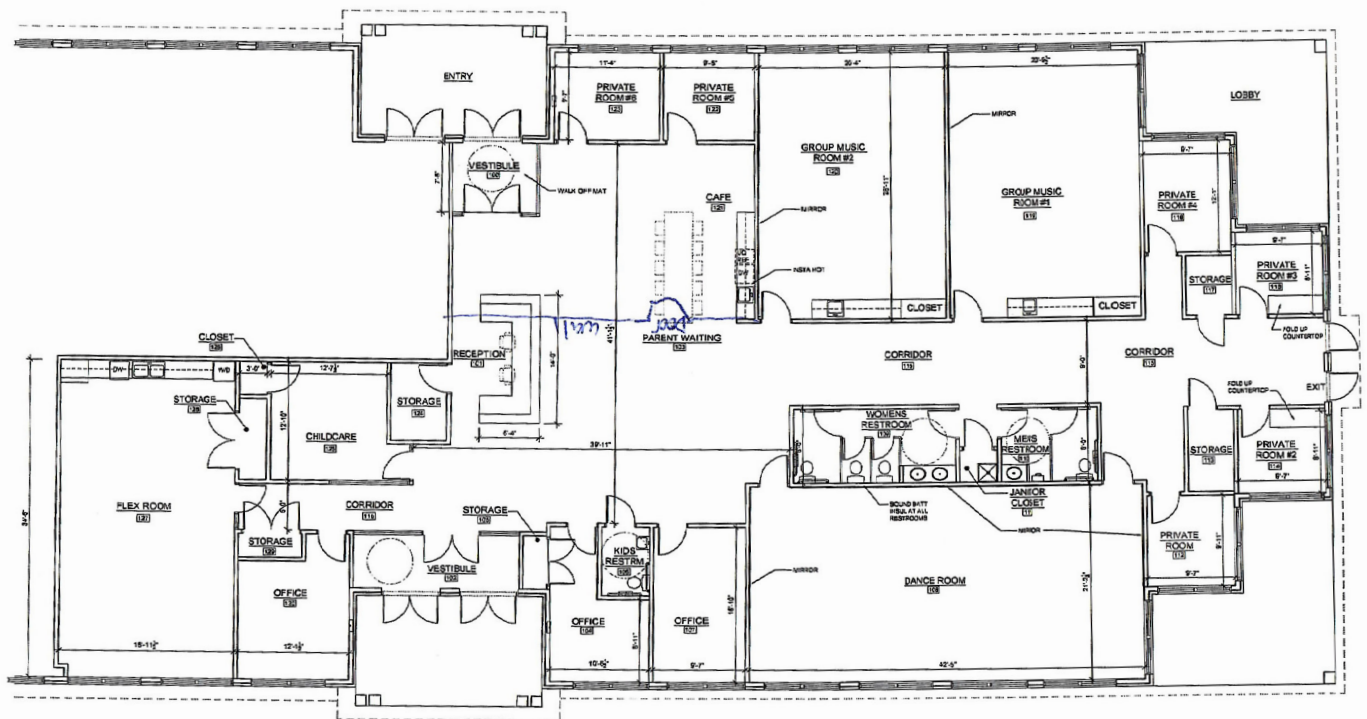
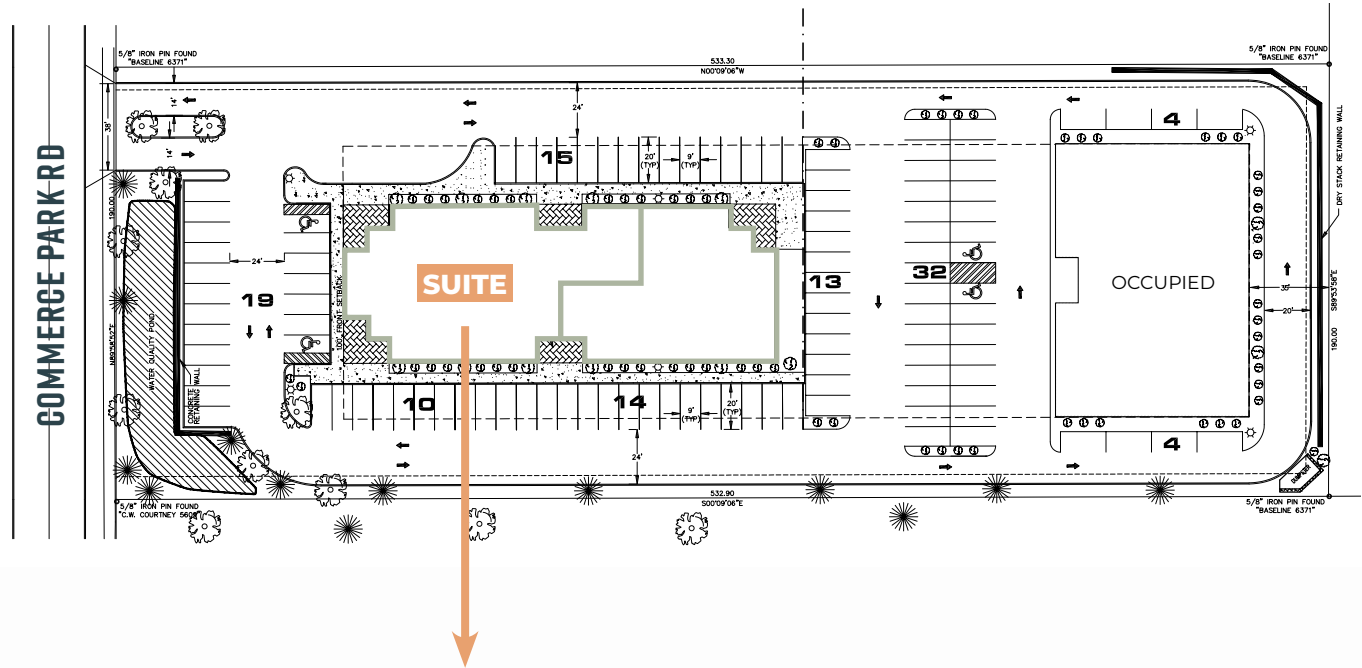
Employee Entrance



SITE & FLOOR PLAN

SUITE A:
7,263 SF

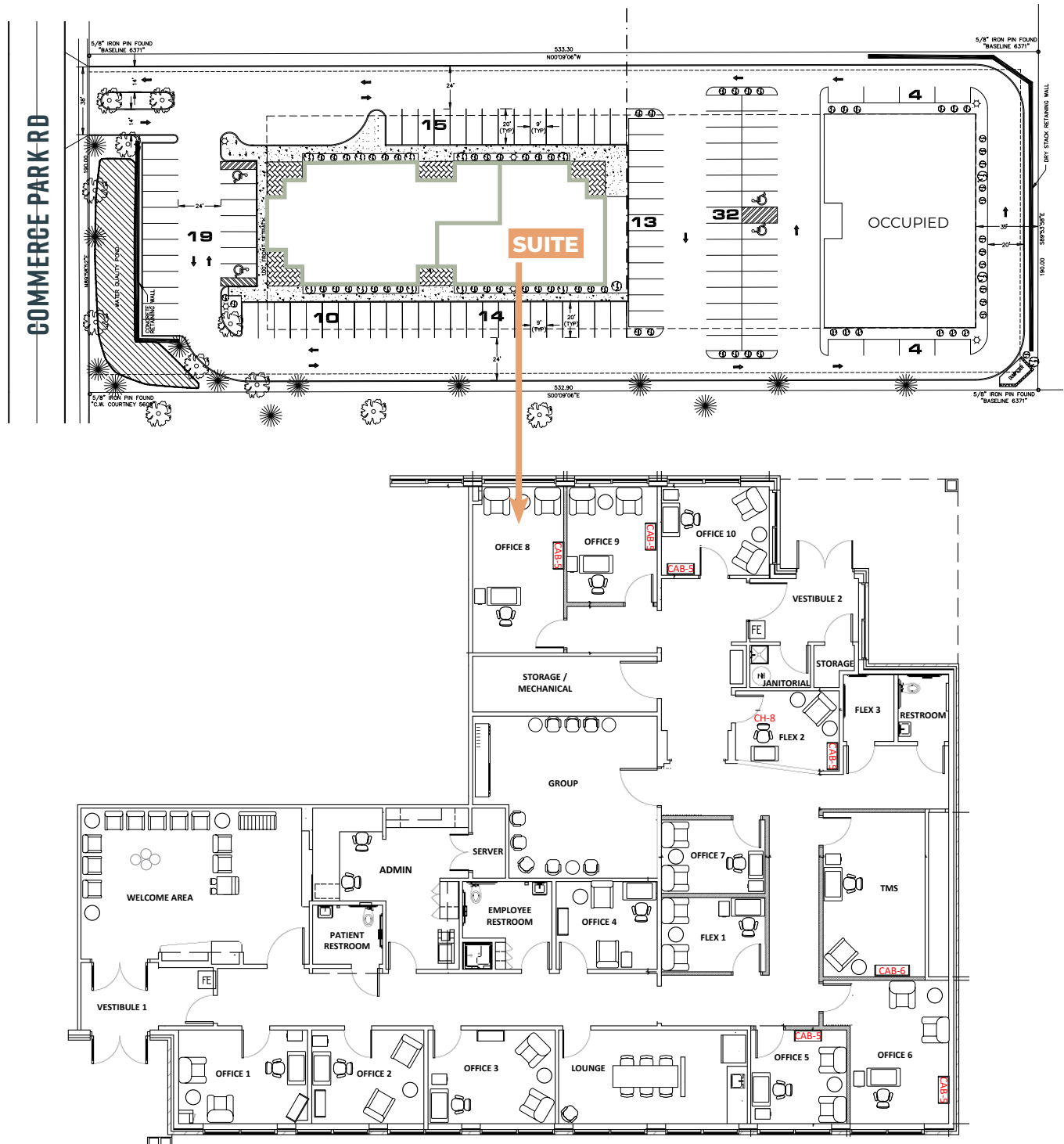
FULL BUILDING AVAILABLE | 12,263 SF



SITE & FLOOR PLAN

SUITE B:
5,000 SF

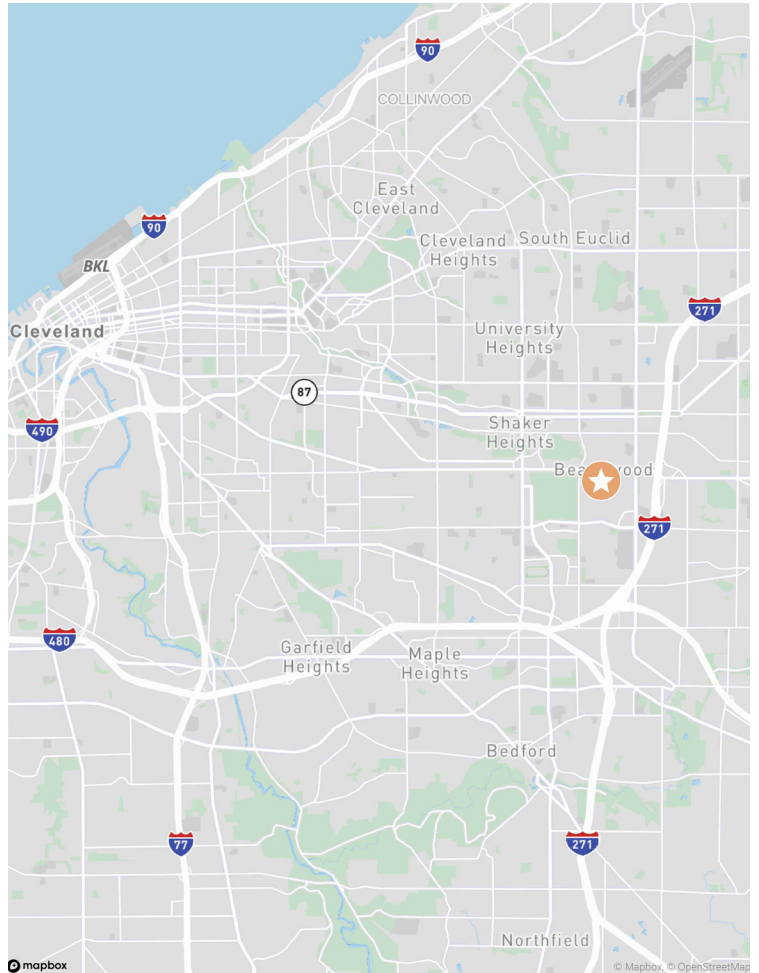
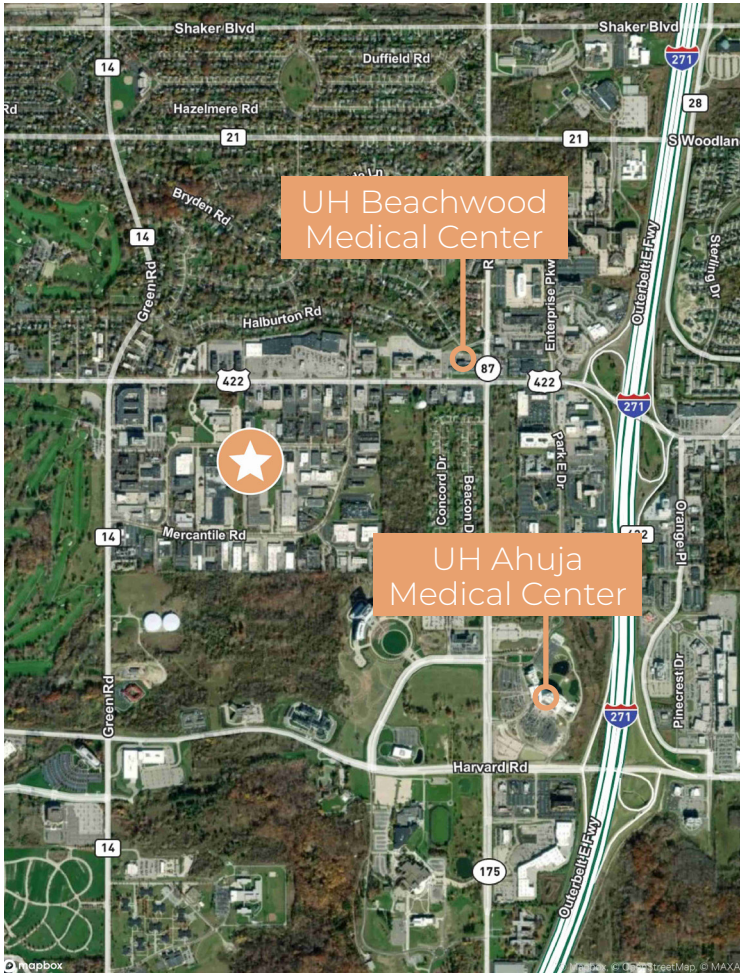
FULL BUILDING AVAILABLE | 12,263 SF



CLICK TO VIEW
INTERIOR
PHOTOS

LOCATION MAP

CLICK TO VIEW
DEMOGRAPHIC
PROFILE



CONTACTS

Daniel Mayer

Vice President

+1 216 363 6437

daniel.mayer@cbre.com

Olivia Reichenbach

Associate

+1 440 781 2811

olivia.reichenbach@cbre.com

CBRE

© 2024 CBRE, Inc. All rights reserved. This information has been obtained from sources believed reliable, but has not been verified for accuracy or completeness. You should conduct a careful, independent investigation of the property and verify all information. Any reliance on this information is solely at your own risk. CBRE and the CBRE logo are service marks of CBRE, Inc. All other marks displayed on this document are the property of their respective owners, and the use of such logos does not imply any affiliation with or endorsement of CBRE. Photos herein are the property of their respective owners. Use of these images without the express written consent of the owner is prohibited.

www.cbre.com/cleveland