

# ONE

## SOUTH ORANGE

Prime Office Space for lease in  
Orlando's Central Business District

One South Orange is located in Orlando's Central Business District allowing superior accessibility to major highways including I-4 and SR-408.

This 76,995 RSF historic brick office building, built in 1913, finished a complete modernization overhaul in 2019. Additionally, the final phase (4th floor) of the Common Area Transformation was recently completed.



CBRE, Inc., as exclusive leasing agent, is pleased to offer the following prime space for lease:

Suite 401

±1,486 RSF

Possession : Immediate  
Term: Negotiable

Suite 5C

±1,572 RSF

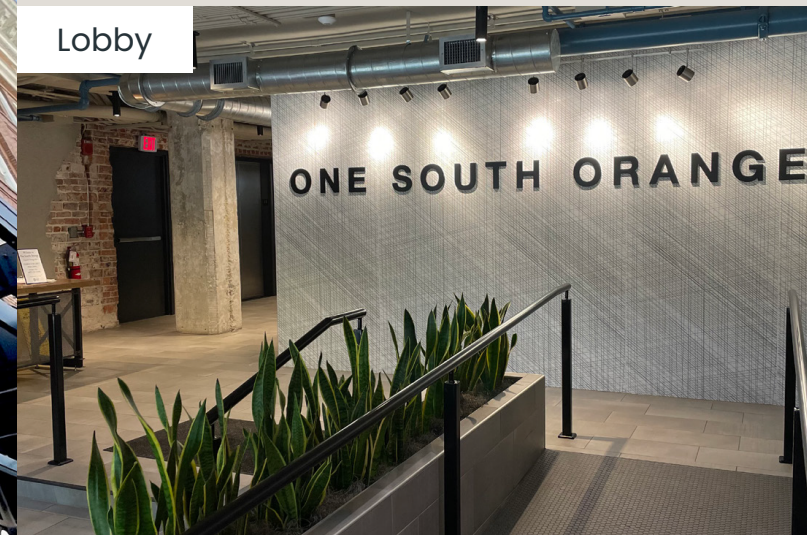
Possession : Immediate  
Term: Negotiable

## Highlights:

- Ground floor retail includes Taco Bell Cantina, Sandwich Cafe & Pizza Bistro
- On-site management and Monday - Friday security staffing 7am - 7pm
- Renovated lobby and common areas
- Full-service bank and ATM available
- Only 1/2 block from public parking garage
- Tenant improvement allowances are available. Future tenants will be inspired by the modern historic atmosphere this building offers. The high ceilings and striking brick walls deliver the ideal setting for a flourishing tech, creative or urban inspired business seeking to elevate their professional presence
- Downtown is bursting with various restaurants, businesses, hotels, retail shops, and entertainment facilities
- Nearby Creative Village, UCF and Valencia College provide diverse talent for the areas expanding job pool



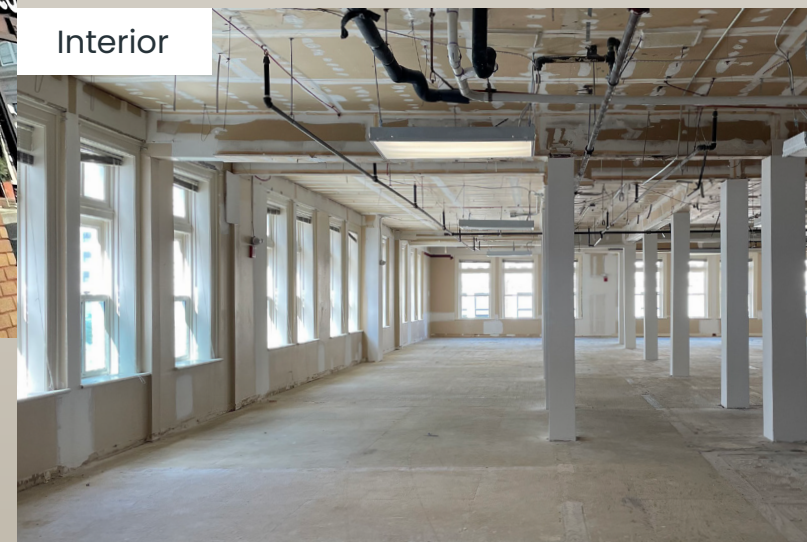
Lobby



Entrance



Interior



Interior



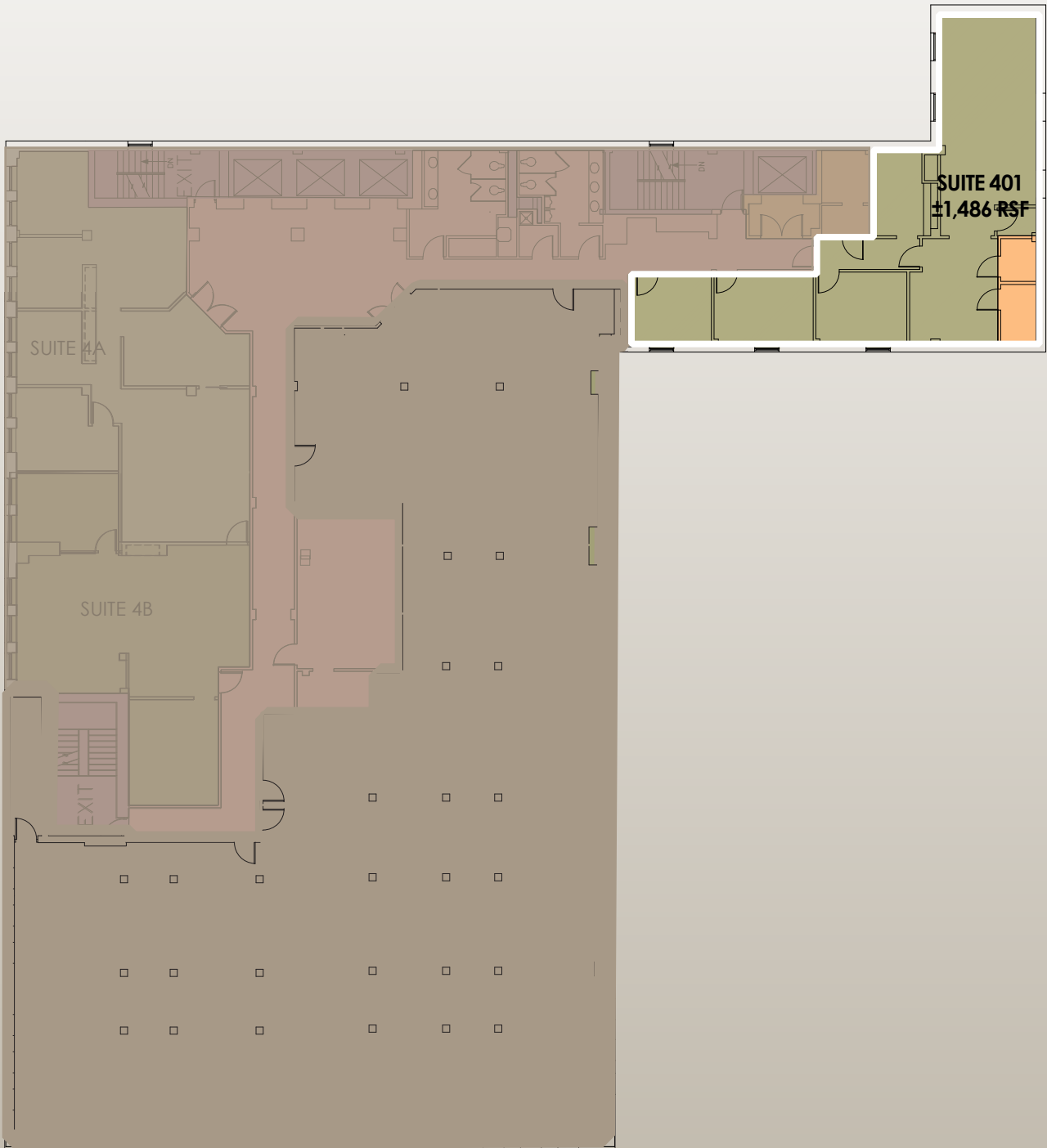
CBRE

CBRE



# Suite 401

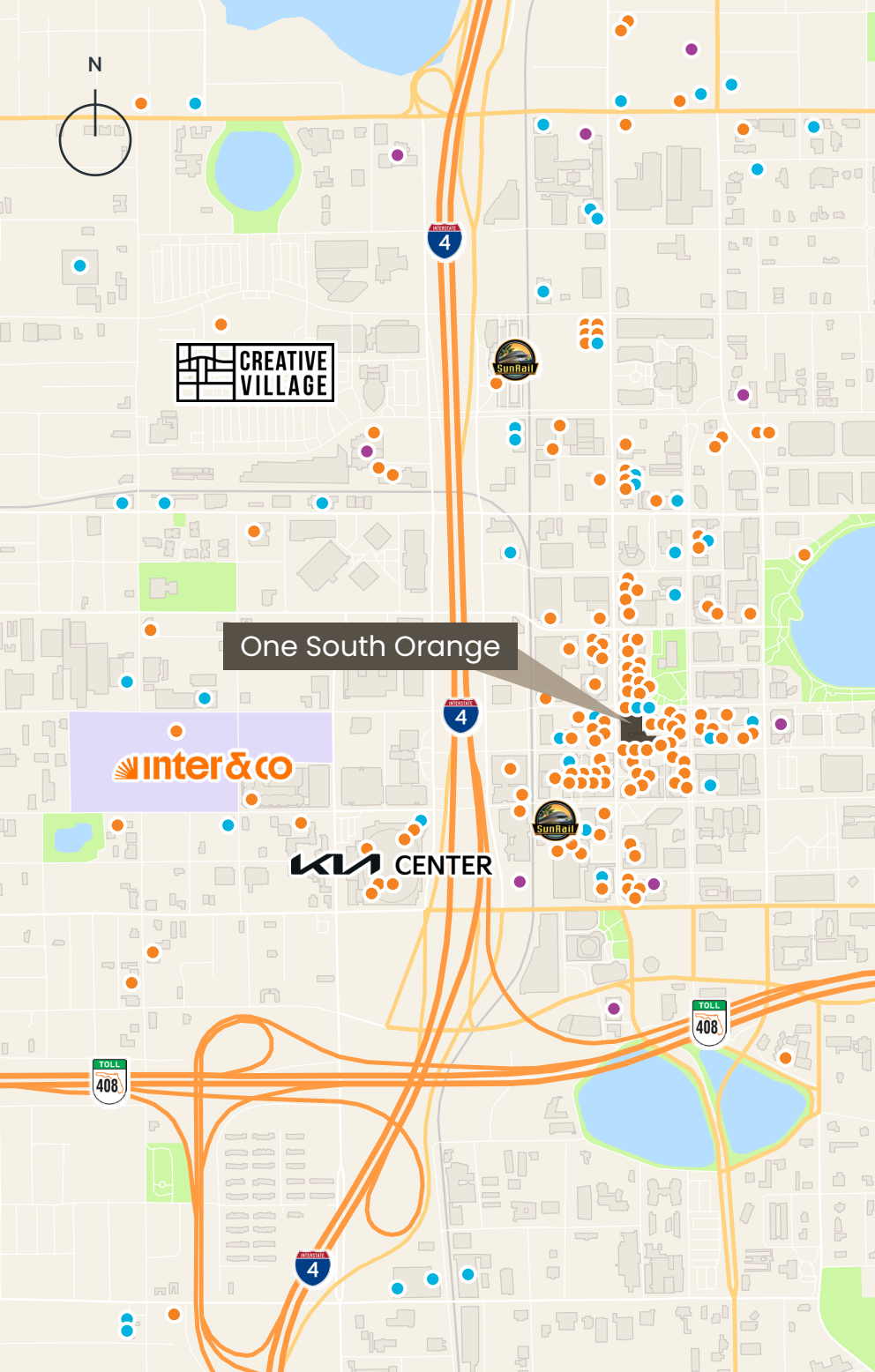
4th Floor | ±1,486 RSF



# Suite 5C

5th Floor | ±1,572 RSF





## Amenities:

2 Major Highways

2 Sunrail Stations

10+ Lynx Bus Stops

● Food & Beverage

● Retail

● Hotels

### Creative Village

Over \$700 million in development activity includes 260 mixed-income apartments; 640 student housing beds; 701 market-rate apartments; 176,000 SF Electronic Arts Orlando Studio corporate anchor; 28,000 SF of ground floor commercial space; and 2.3-acre Luminary Green park. Phase 2 currently underway with a 185,000-SF multi-tenant office building, 325 market-rate apartments, a 180-room hotel, 190 mixed-income housing and 500+ student housing beds.

### Inter&Co Stadium

- Orlando City Soccer (MLS)
- Orlando Pride (NWSL)

### Kia Center

- Orlando Magic (NBA)
- Orlando Solar Bears (ECHL)
- Orlando Predators (AFL)

**Todd Davis, SIOR, CCIM**  
 First Vice President  
 +1 407 404 5107  
 todd.davis1@cbre.com

© 2024 CBRE, Inc. This information has been obtained from sources believed reliable. We have not verified it and make no guarantee, warranty or representation about it. Any projections, opinions, assumptions or estimates used are for example only and do not represent the current or future performance of the property. You and your advisors should conduct a careful, independent investigation of the property to determine to your satisfaction the suitability of the property for your needs. CBRE and the CBRE logo are service marks of CBRE, Inc. and/or its affiliated or related companies in the United States and other countries. All other marks displayed on this document are the property of their respective owners.

**CBRE**