



# Hampton Road Industrial Park

---

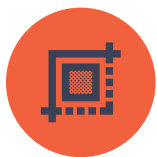
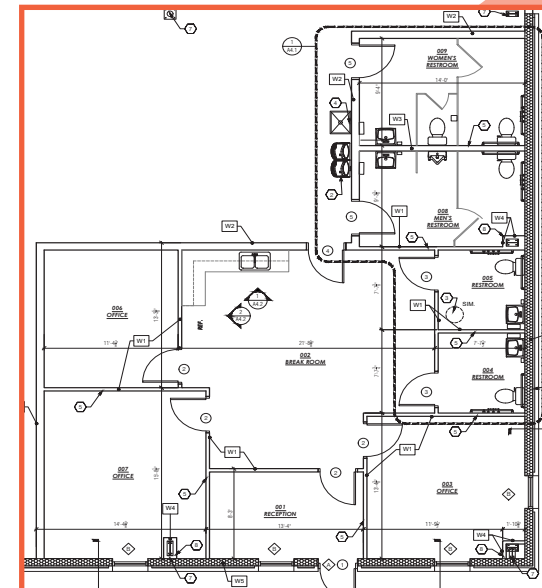
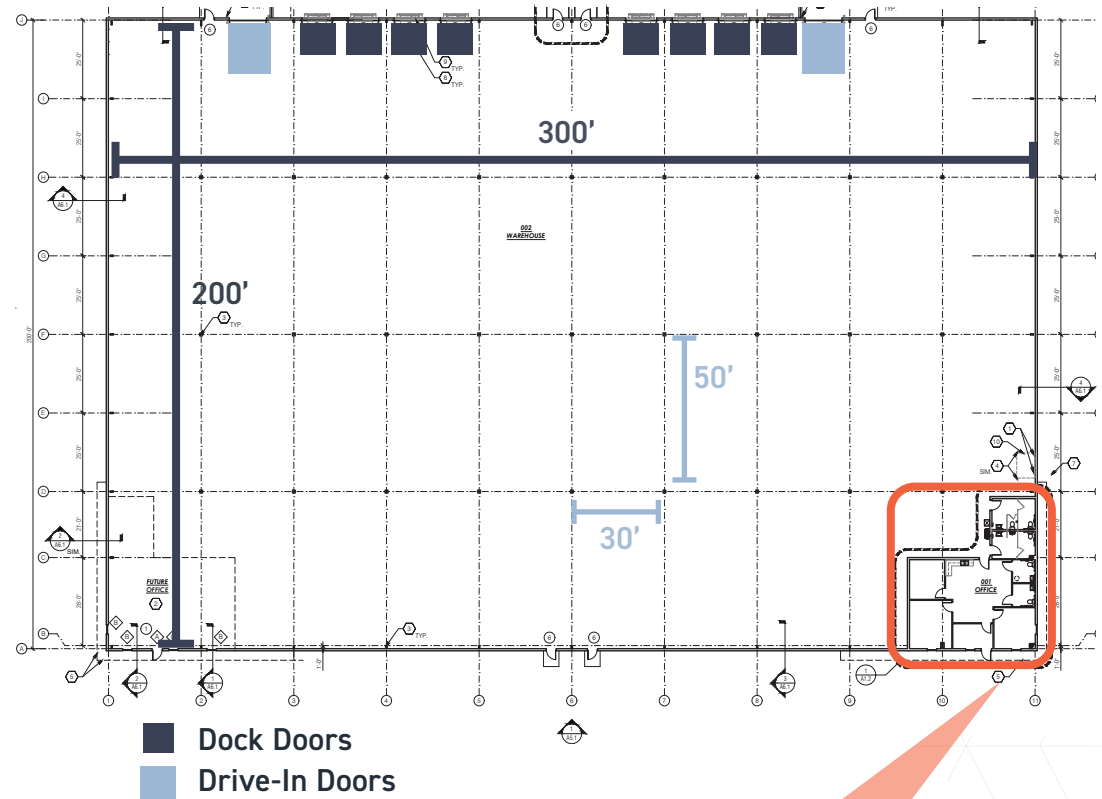
Building 2 Under Construction  
Q2 2026 Delivery

733 HAMPTON ROAD, WILLIAMSTON, SC 29697



# Building 2 Details

Building Size	60,000 SF
Office Space:	1,450 SF
Lot Size:	9.00 Acres
Building Dimensions:	200' x 300'
Dock Doors:	8 (10' x 10')
Dock Packages:	35,000 lb Mechanical Levelers
Drive-In Doors:	2 (12' x 14')
Tenant Entries:	2
Fire Protection:	ESFR
Floor:	6" reinforced, 4000 psi
Power:	800 amps
Auto Parking:	23
Outside Storage:	Available
Truck Court:	135'



60,000 SF  
BUILDING SIZE



8 (10' X 10')  
DOCK DOORS



50' X 30'  
COLUMN SPACING



27'8" - 35'3"  
CLEAR HEIGHT

# Building 2 Details



# Park Plan



# Park Rendering

---

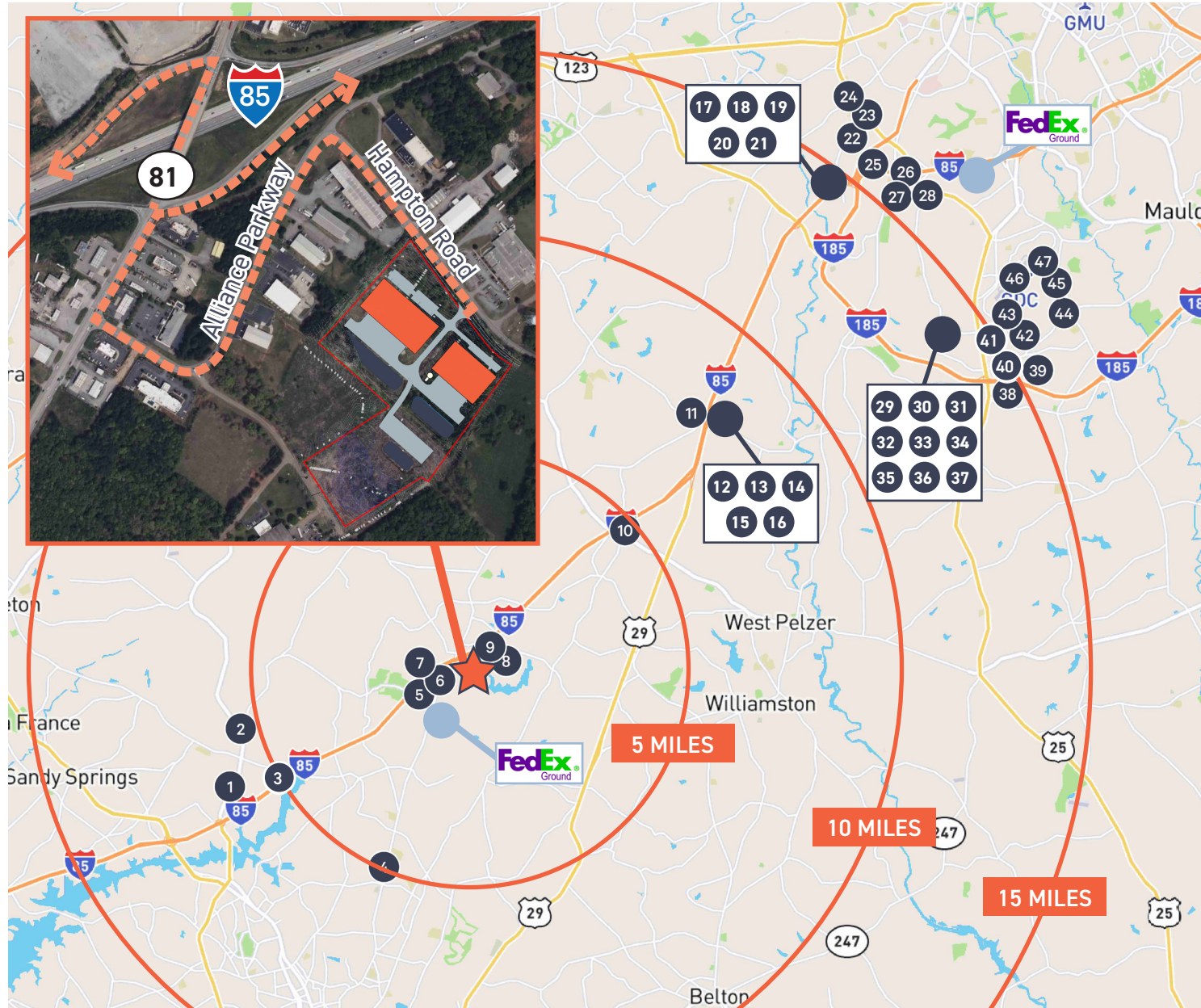


# Construction Update

---

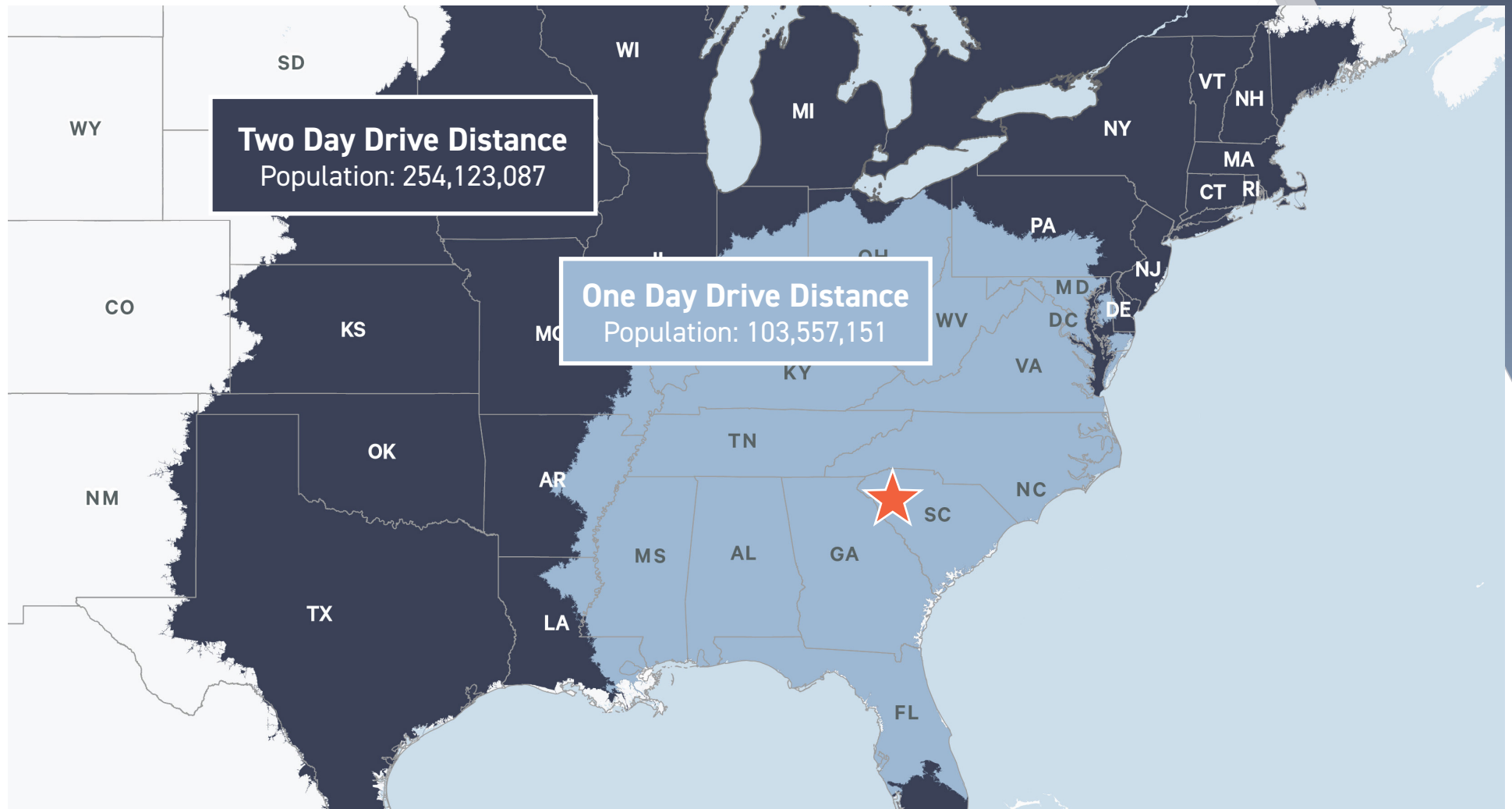


# Location Map



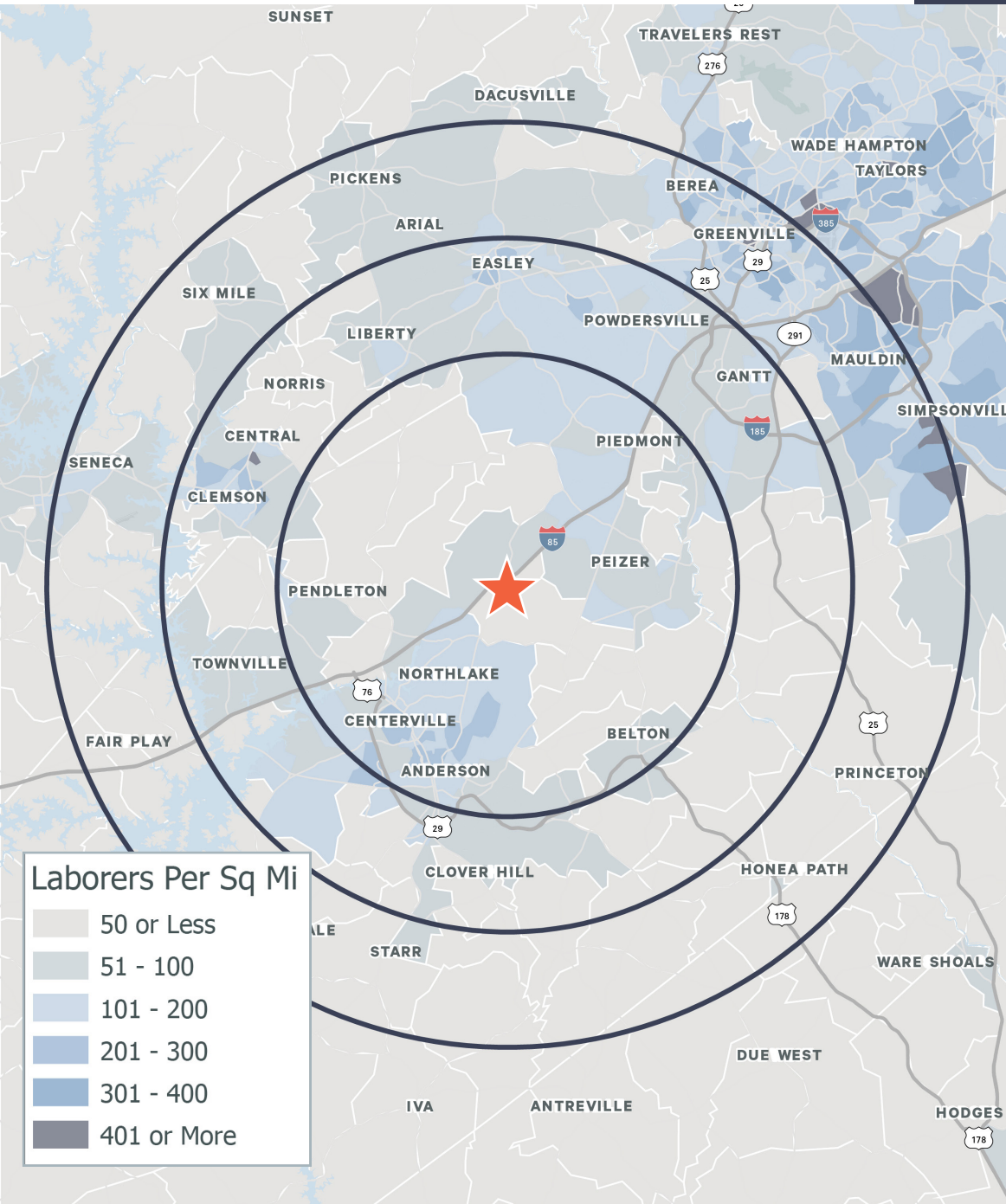
1. Glen Raven
2. Nutra Manufacturing
3. Vertiv
4. Orian Rugs
5. Smurfit Kappa
6. Bosch
7. TTI
8. Walgreens DC
9. EuWe Eugen Wexler
10. Vertiv
11. Coca Cola
12. Bosch
13. Cradlepoint
14. CHEP USA
15. NRTC Automation
16. Cardinal Health
17. Transcendia
18. Amazon Delivery
19. ACL Airshop
20. Softbox
21. Smith Dray Line
22. Colgate-Palmolive
23. Prodigy Cabinetry
24. Sunland Logistics
25. Access Lighting
26. Sweet Street
27. YRC Freight
28. Warehouse Services
29. Haier
30. Michelin
31. Timberlab
32. Orbis
33. Jtekt
34. Magna
35. Padagis
36. Kimura
37. GE
38. Magna
39. Michelin
40. Americold
41. Verdecò
42. Custom Goods
43. Lockheed Martin
44. 3M
45. Multi-Pack
46. Donaldson Airport
47. SCTAC

# Drive Time Map



	Population	Daytime Population	Businesses	Labor Force	Bachelor's Degree or Higher	Average HH Income
10 Miles	128,517	126,187	3,868	60,519	15,693	\$81,828
15 Miles	302,043	293,037	8,372	139,955	33,708	\$78,754
20 Miles	543,502	544,858	16,870	257,288	68,349	\$84,022

# Labor Heat Map



I-85	0.8 Miles
I-185	15.2 Miles
Downtown Greenville	20.9 Miles
GSP International Airport	30.9 Miles
Inland Port Greer	38.2 Miles
Charlotte	120 Miles
Atlanta	126 Miles

FedEx Ground	2.2 Miles
FedEx Ground	18.8 Miles
UPS Freight	29.6 Miles
FedEx Air Freight	33.9 Miles
FedEx Freight	35.7 Miles
Averitt Express	35.9 Miles
FedEx Ground	41.8 Miles
UPS Ground	46.8 Miles

# Hampton Road Industrial Park

733 HAMPTON ROAD | WILLIAMSTON, SC



## CONTACTS

Trey Pennington, SIOR  
Vice Chairman  
+1 894 527 6095  
trey.pennington@cbre.com

Jeff Benedict, SIOR  
First Vice President  
+1 864 235 1961  
jeff.benedict@cbre.com

Tripp Speaks  
Associate  
+1 864 235 6169  
tripp.speaks@cbre.com

**HAMPTON**  
**ROAD INDUSTRIAL**  
**PARK**

© 2026 CBRE, Inc. All rights reserved. This information has been obtained from sources believed reliable but has not been verified for accuracy or completeness. CBRE, Inc. makes no guarantee, representation or warranty and accepts no responsibility or liability as to the accuracy, completeness, or reliability of the information contained herein. You should conduct a careful, independent investigation of the property and verify all information. Any reliance on this information is solely at your own risk. CBRE and the CBRE logo are service marks of CBRE, Inc. All other marks displayed on this document are the property of their respective owners, and the use of such marks does not imply any affiliation with or endorsement of CBRE. Photos herein are the property of their respective owners. Use of these images without the express written consent of the owner is prohibited.

**CBRE**