

8

DAVISON FWY

OAKLAND PARK BLVD



2,061,538 CLASS A INDUSTRIAL PARK



12280 OAKLAND PARK BLVD:
70,400 SF AVAILABLE IMMEDIATELY



4 MILES TO FACTORY ZERO /
9 MILES TO JNAP



EASY FREEWAY ACCESS TO I-75
AND DAVIDSON FREEWAY



COMPETITIVE OPERATING EXPENSES



TENANTS INCLUDE MAGNA, VALEO,
YANFENG, MOBIS, AMONG OTHERS



OAKLAND PARK

LAUREN SCARPSPACE

Vice Chairman
+1 313 319 8134
lauren.scarpspace@cbre.com

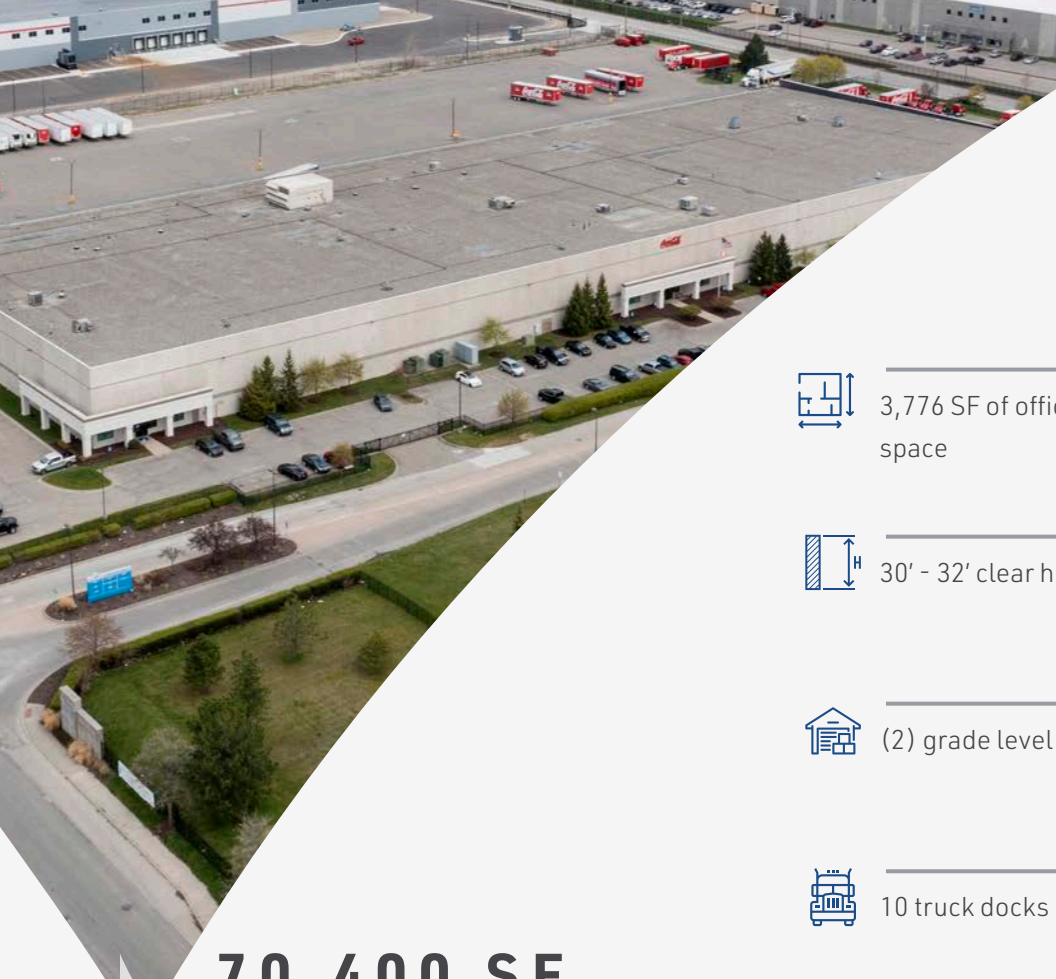
EUGENE J. AGNONE III

Executive Vice President
+1 313 506 1668
eugene.agnone@cbre.com

BLAKE BURSTEIN

Vice President
+1 248 302 8961
blake.burstein@cbre.com





12280 OAKLAND PARK BLVD

**70,400 SF
AVAILABLE IN
THIS CLASS A
INDUSTRIAL
FACILITY**



3,776 SF of office & shop support space



ESFR fire suppression



30' - 32' clear height



Bays: 55' x 40'



(2) grade level doors



Dimensions: 440' x 160'



10 truck docks



1,200 Amp, 480 Volt, 3 Phase



32+ parking spaces



Built in 2002



Ample trailer storage available in park



\$0.35 PSF est. taxes & insurance

**LAUREN
SCARPACE**

Vice Chairman
+1 313 319 8134
lauren.scarpace@cbre.com

**EUGENE J.
AGNONE III**

Executive Vice President
+1 313 506 1668
eugene.agnone@cbre.com

**BLAKE
BURSTEIN**

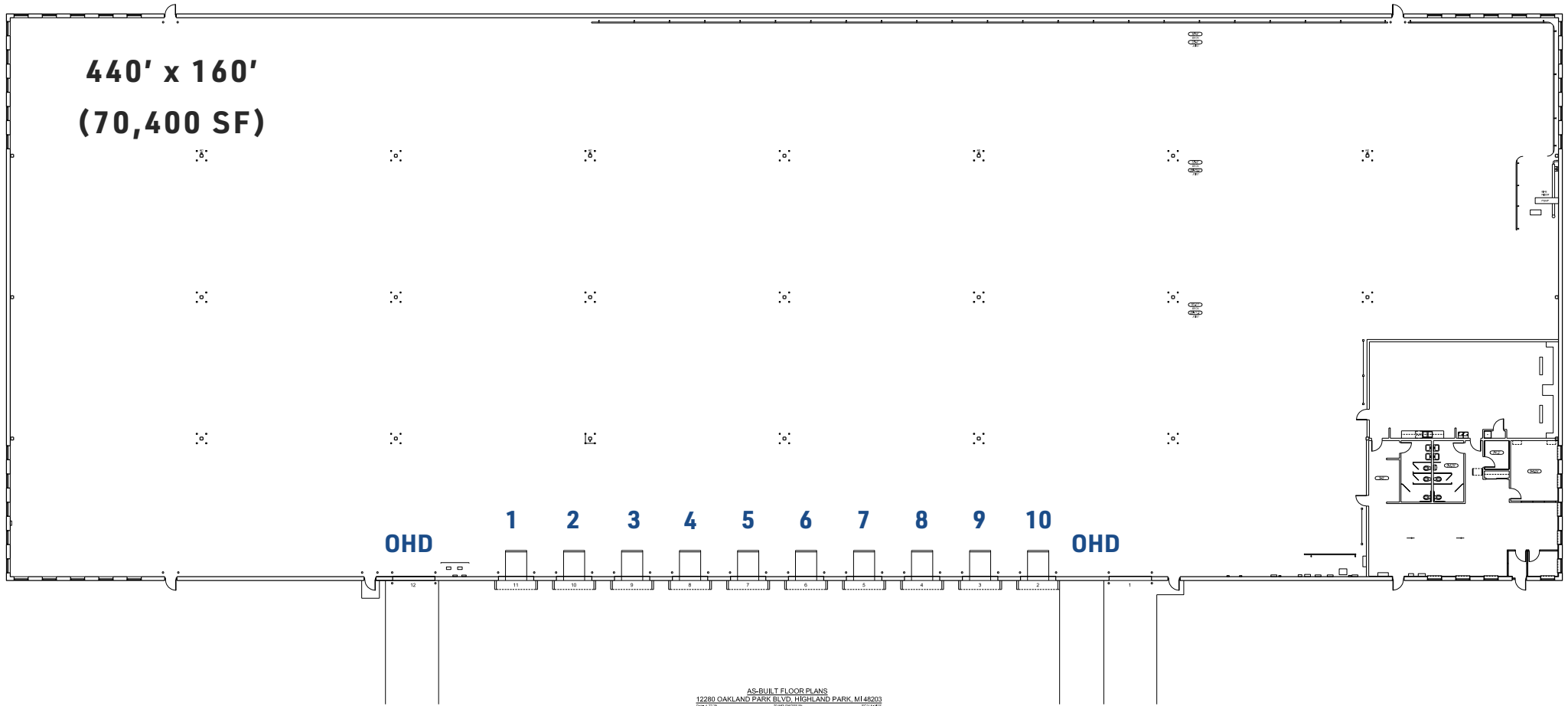
Vice President
+1 248 302 8961
blake.burstein@cbre.com



12280 OAKLAND PARK BLVD



440' x 160'
(70,400 SF)



AS-BUILT FLOOR PLANS
12280 OAKLAND PARK BLVD, HIGHLAND PARK, MI 48203
DATE: 04/11/2017
DRAWN BY: [unreadable]

FLOOR PLAN

LAUREN
SCARPACE

Vice Chairman
+1 313 319 8134
lauren.scarpace@cbre.com

EUGENE J.
AGNONE III

Executive Vice President
+1 313 506 1668
eugene.agnone@cbre.com

BLAKE
BURSTEIN

Vice President
+1 248 302 8961
blake.burstein@cbre.com



12280 OAKLAND PARK BLVD



SITE PLAN

**LAUREN
SCARPACE**

Vice Chairman
+1 313 319 8134
lauren.scarpace@cbre.com

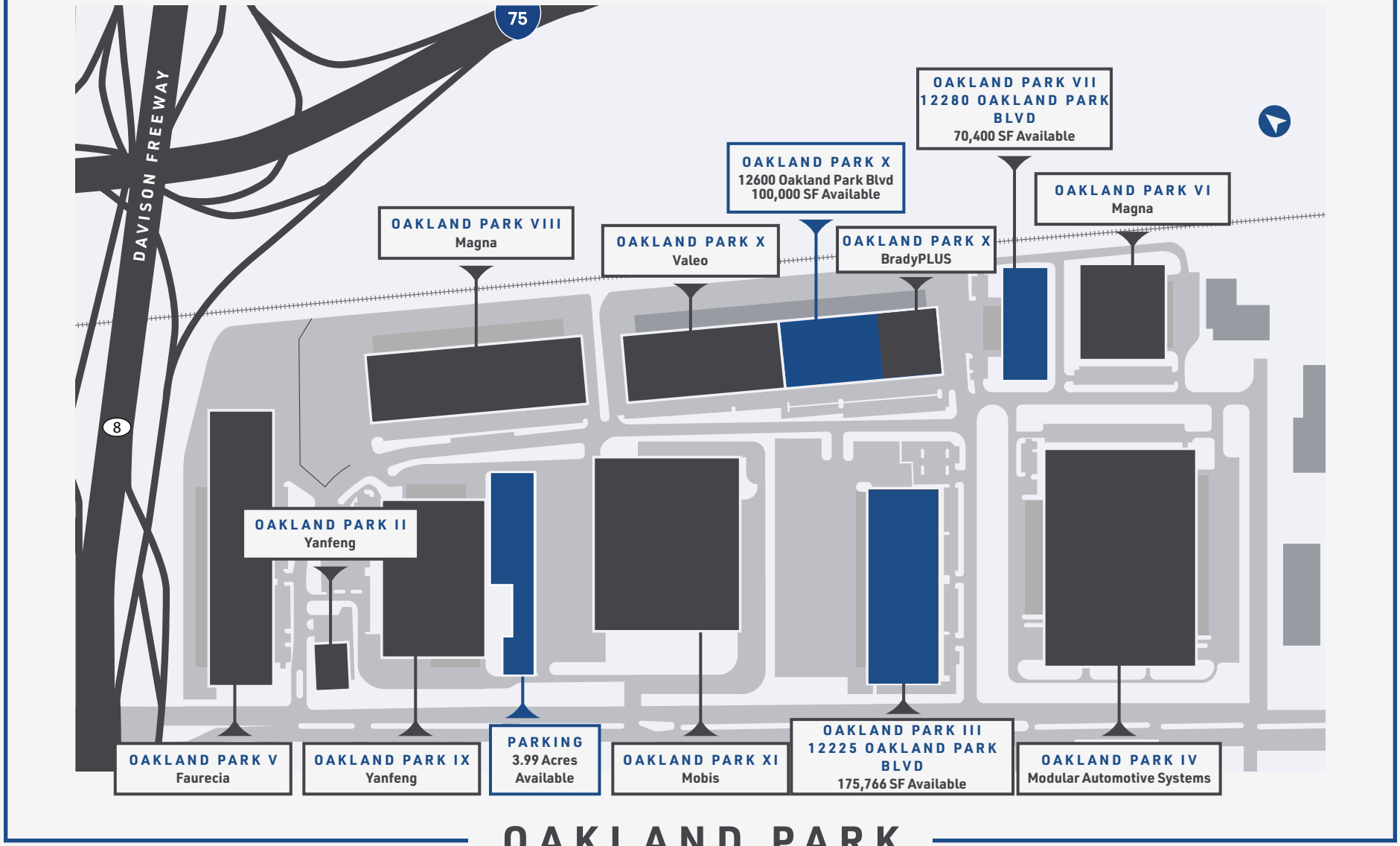
**EUGENE J.
AGNONE III**

Executive Vice President
+1 313 506 1668
eugene.agnone@cbre.com

**BLAKE
BURSTEIN**

Vice President
+1 248 302 8961
blake.burstein@cbre.com





**LAUREN
SCARPACE**

Vice Chairman
+1 313 319 8134
lauren.scarpace@cbre.com

**EUGENE J.
AGNONE III**

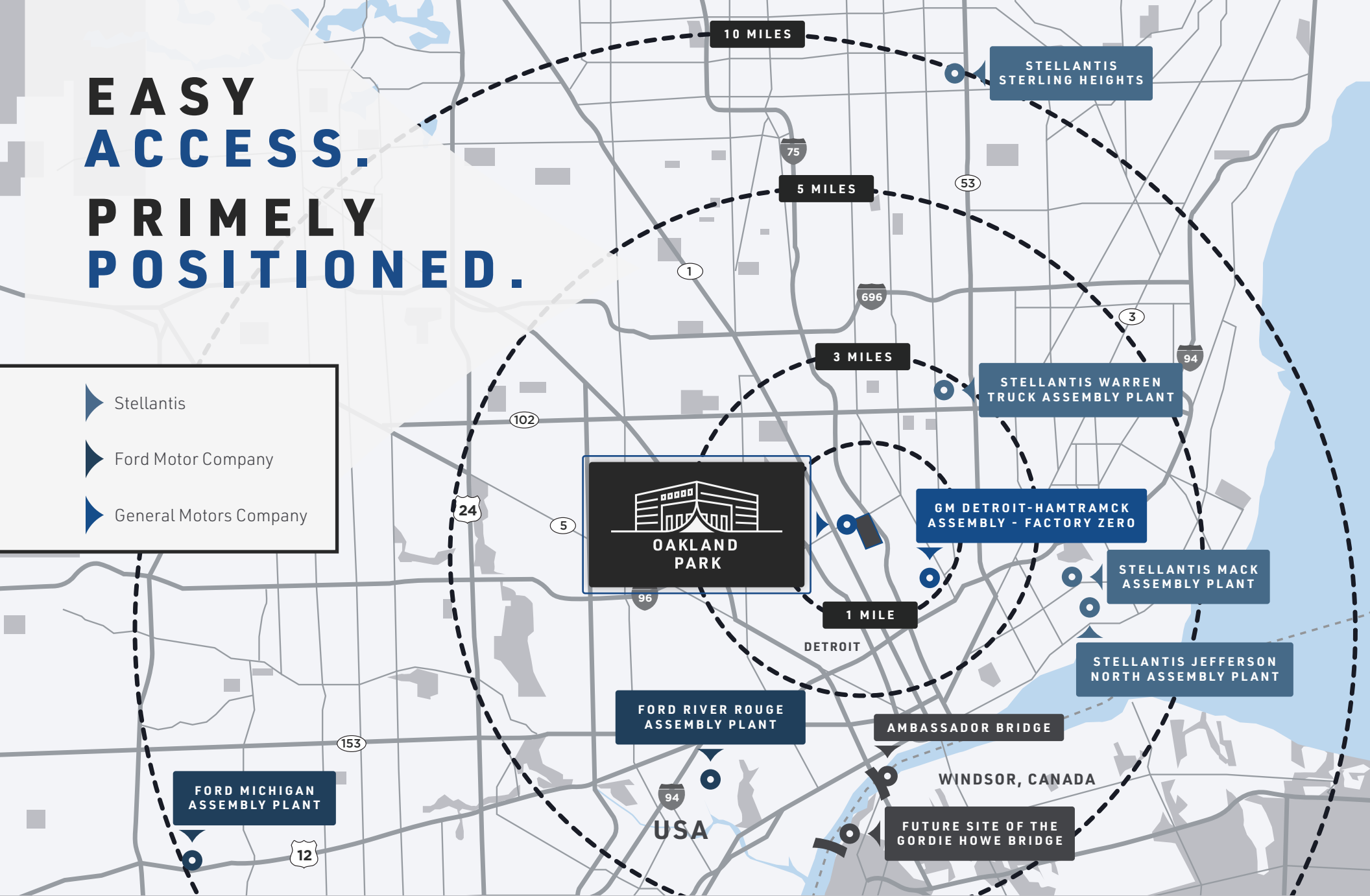
Executive Vice President
+1 313 506 1668
eugene.agnone@cbre.com




**BLAKE
BURSTEIN**

Vice President
+1 248 302 8961
blake.burstein@cbre.com



EASY ACCESS. PRIMELY POSITIONED.



-  Stellantis
-  Ford Motor Company
-  General Motors Company



LAUREN SCARPACE

Vice Chairman
+1 313 319 8134
lauren.scarpace@cbre.com

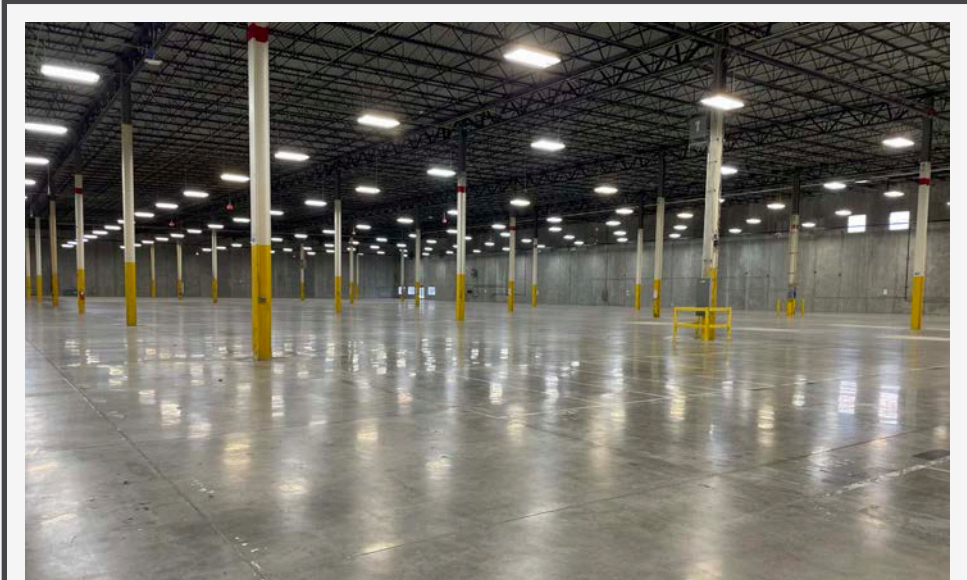
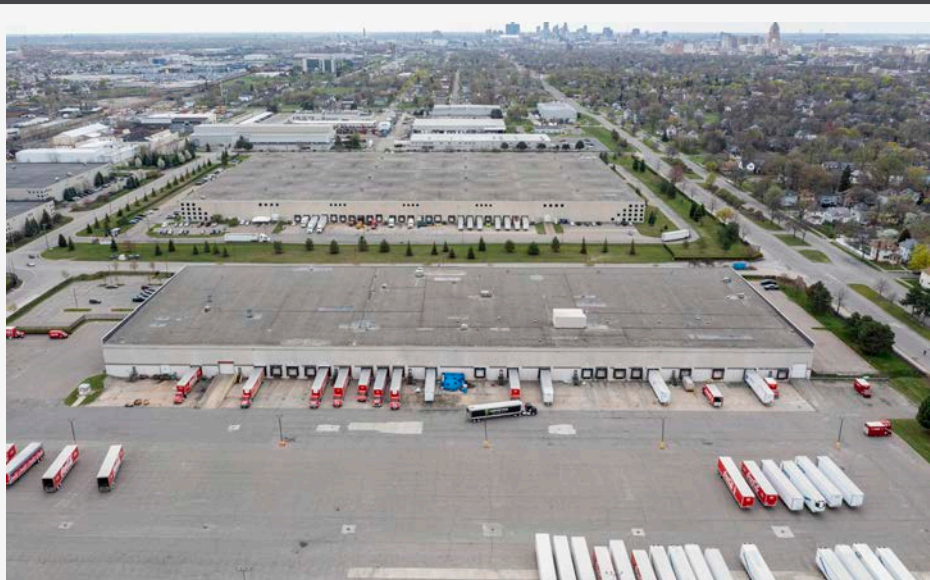
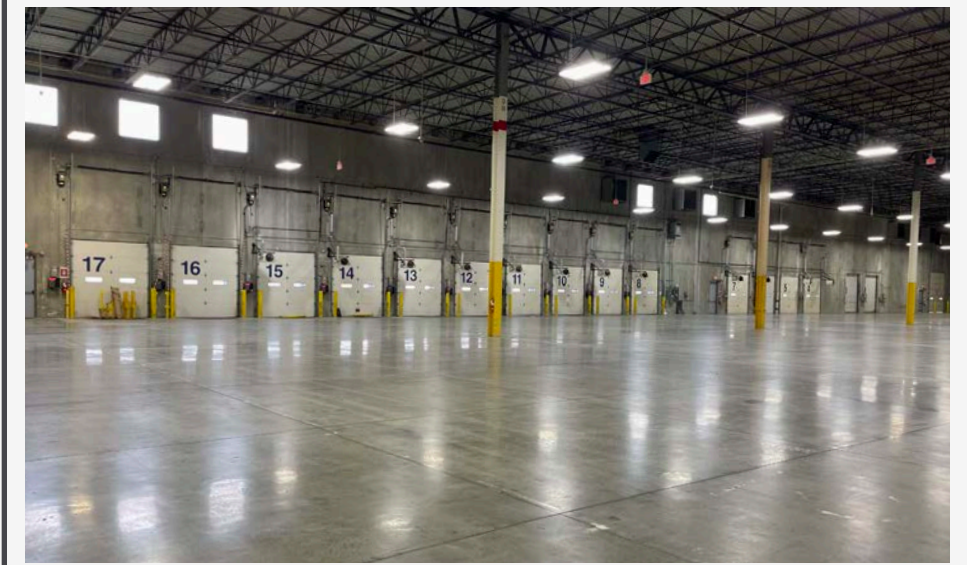
EUGENE J. AGNONE III

Executive Vice President
+1 313 506 1668
eugene.agnone@cbre.com

BLAKE BURSTEIN

Vice President
+1 248 302 8961
blake.burstein@cbre.com





**LAUREN
SCARPACE**

Vice Chairman
+1 313 319 8134
lauren.scarpace@cbre.com

**EUGENE J.
AGNONE III**

Executive Vice President
+1 313 506 1668
eugene.agnone@cbre.com

**BLAKE
BURSTEIN**

Vice President
+1 248 302 8961
blake.burstein@cbre.com





CBRE



**FOR MORE
INFORMATION
PLEASE CONTACT**

**LAUREN
SCARPACE**

Vice Chairman
+1 313 319 8134
lauren.scarpace@cbre.com

**EUGENE J.
AGNONE III**

Executive Vice President
+1 313 506 1668
eugene.agnone@cbre.com

**BLAKE
BURSTEIN**

Vice President
+1 248 302 8961
blake.burstein@cbre.com

©2025 CBRE, Inc. All rights reserved. This information has been obtained from sources believed reliable, but has not been verified for accuracy or completeness. You should conduct a careful, independent investigation of the property and verify all information. Any reliance on this information is solely at your own risk. CBRE and the CBRE logo are service marks of CBRE, Inc. All other marks displayed on this document are the property of their respective owners, and the use of such logos does not imply any affiliation with or endorsement of CBRE. Photos herein are the property of their respective owners. Use of these images without the express written consent of the owner is prohibited.

