

UNDER CONSTRUCTION

CBRE

INDUSTRIAL

747,824 TOTAL SF | 59.9 AC

FOR SALE OR LEASE

6942 INNOVATION WAY, ORLANDO, FL 32831



PROJECT DATA

Site Area

Lot Size 59.9 AC
2,610,943 SF

Building Area

Building 100339,691 SF
Building 200.....408,133 SF
Combined Area.....747,824 SF

Power

Site Capacity.....16+ mW

Parking

Building 100
Auto282 Spaces
Trailer.....75 Spaces

Building 200
Auto337 Spaces
Trailer.....87 Spaces

Combined
Auto619 Spaces
Trailer.....162 Spaces

CONSTRUCTION PROGRESS – POURING PADS



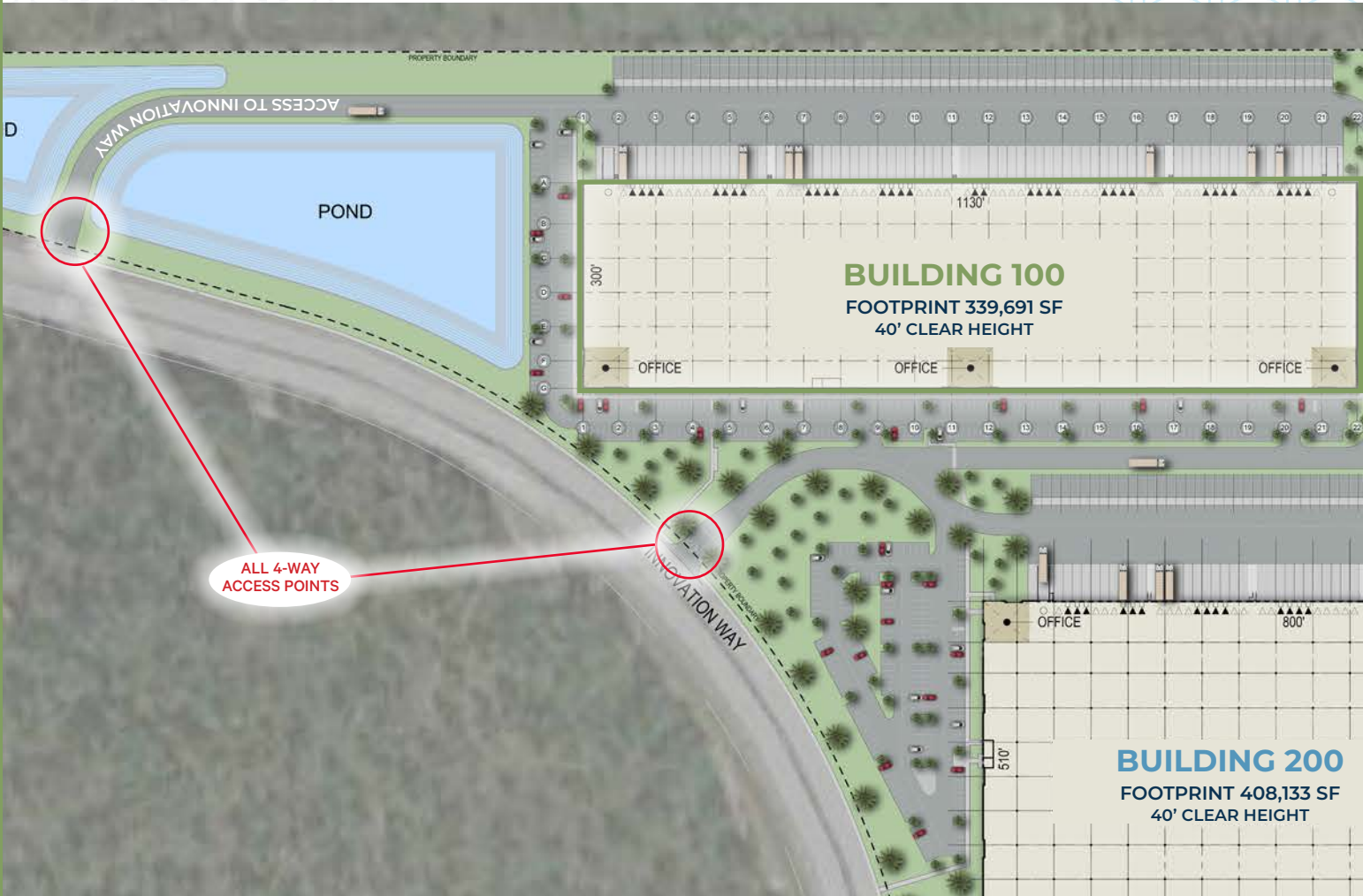

Venture Park
Beachline II & III



BUILDING DATA

Building Footprint.....339,691 SF
 Clear Height.....40'
 Building Dimensions.....1,130' X 300'
 Column Spacing.....54'x50' (60' Speed Bay)
 Dock-High Doors.....73
 Postions with Pit Levelers.....34 (40k lb Capacity)

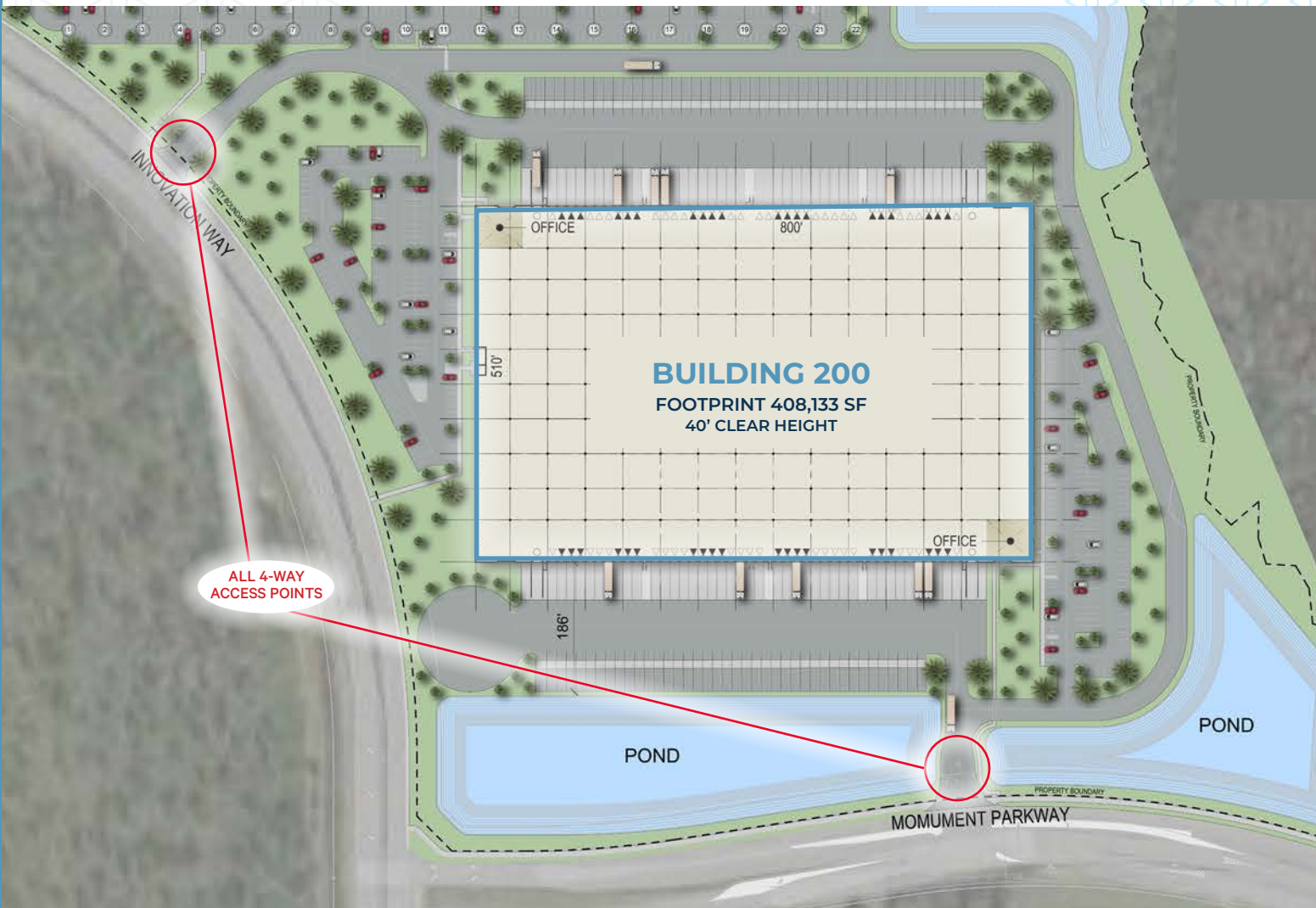
Drive-In Doors.....2
 Power.....4,000 A (Expandable)
 Sprinkler.....ESFR
 Auto Parking.....282 Stalls (0.83 per 1,000 SF)
 Trailer Parking.....75 Stalls
 Truck Court.....185' (Private)

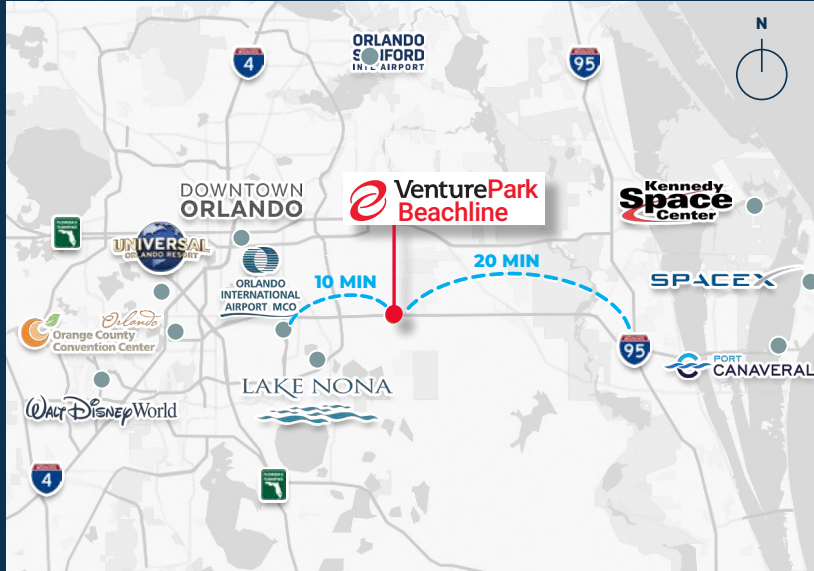




BUILDING DATA

Building Footprint.....	408,133 SF	Drive-In Doors.....	4
Clear Height.....	40'	Power.....	4,000 A (Expandable)
Building Dimensions.....	800' X 510'	Sprinkler.....	ESFR
Column Spacing.....	54'x50' (60' Speed Bay)	Auto Parking.....	337 Stalls (0.83 per 1,000 SF)
Dock-High Doors.....	82	Trailer Parking.....	87 Stalls
Postions with Pit Levelers.....	40 (40k lb Capacity)	Truck Court.....	185' (Private)

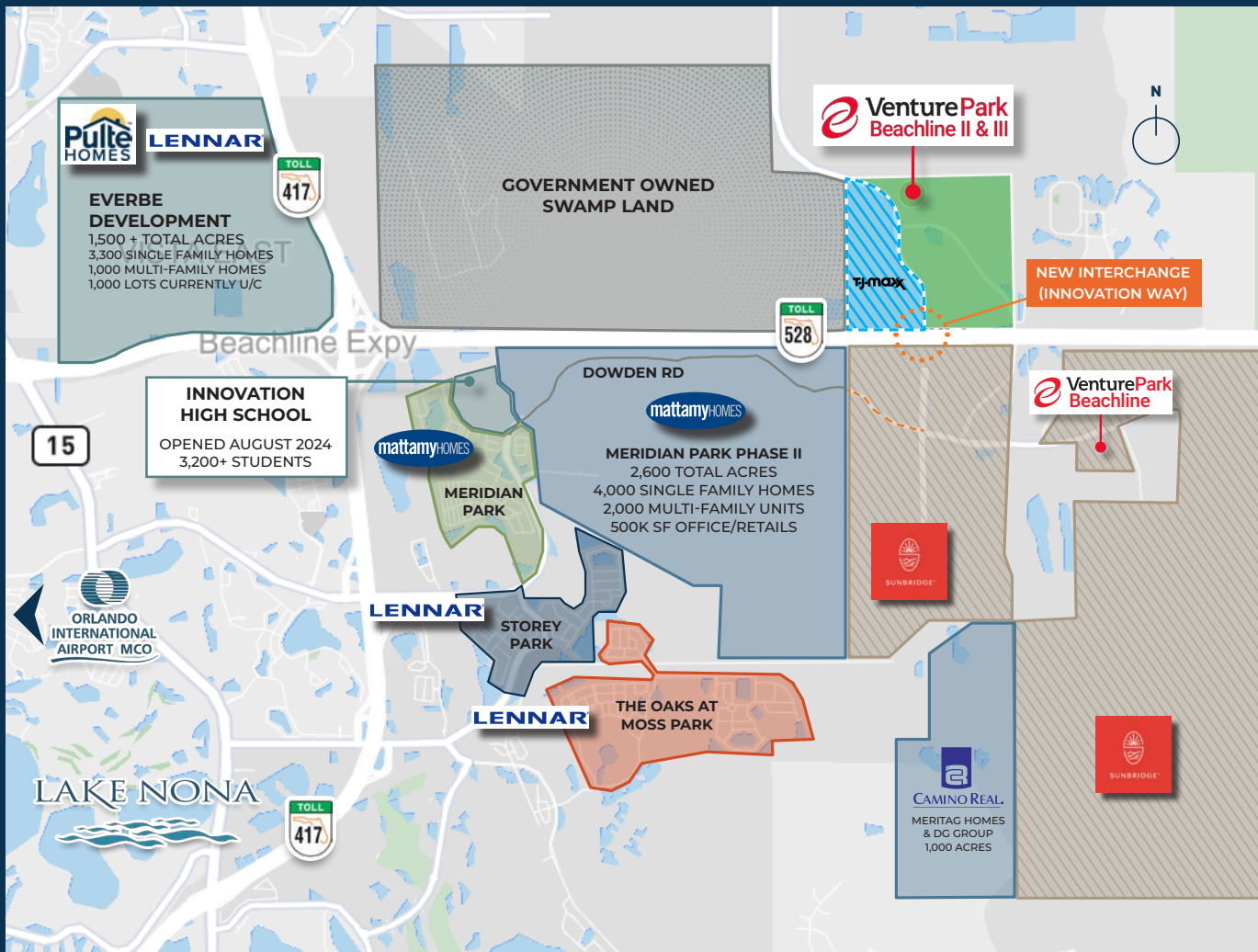




KEY HIGHLIGHTS



- + Site has potential for 16+ mW of power, accompanied with dual feeds and redundant circuits
- + Available For Lease or User-Owner Sale
- + Less than 1 Mile to SR-528/Beachline Highway, providing immediate access to Orlando International, SR-417, I-95, and the Space Coast
- + Within a one-day turn-around of **22 million** customers, and eight hours of **45 million**



FLORIDA INDUSTRIAL & LOGISTICS CONTACTS

David Murphy

Vice Chairman
407 404 5020
david.murphy@cbre.com

Monica Wonus

Executive Vice President
+1 407 404 5042
monica.wonus@cbre.com

Gaby Gissy

Associate
+1 407 404 5012
gaby.gissy@cbre.com

Sharif Baker

Associate
+1 407 404 5018
sharif.baker@cbre.com

© 2026 CBRE, Inc. All rights reserved. This information has been obtained from sources believed reliable but has not been verified for accuracy or completeness. CBRE, Inc. makes no guarantee, representation or warranty and accepts no responsibility or liability as to the accuracy, completeness, or reliability of the information contained herein. You should conduct a careful, independent investigation of the property and verify all information. Any reliance on this information is solely at your own risk. CBRE and the CBRE logo are service marks of CBRE, Inc. All other marks displayed on this document are the property of their respective owners, and the use of such marks does not imply any affiliation with or endorsement of CBRE. Photos herein are the property of their respective owners. Use of these images without the express written consent of the owner is prohibited.

CBRE