

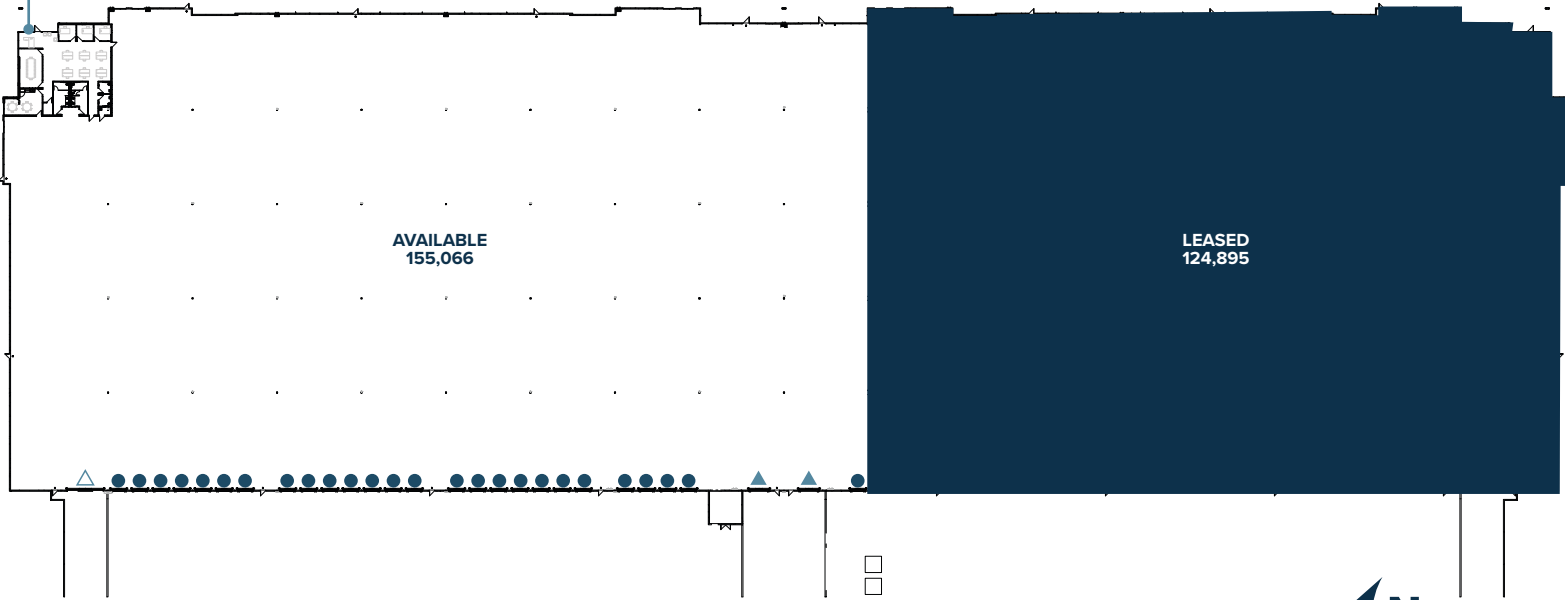
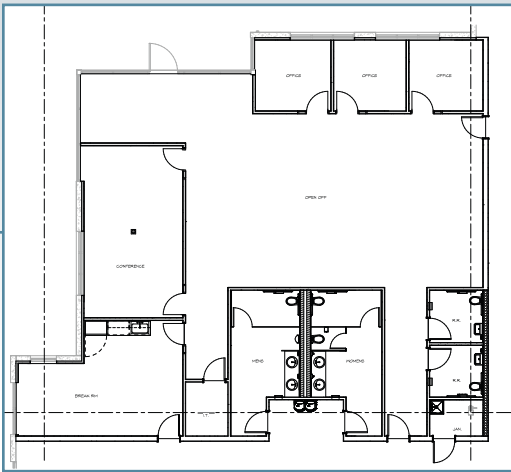
BUILDING A - ±155,066 SF

4200 S. Cotton Lane, Goodyear AZ



- Divisible to ±50,000 SF
- ±36' Clear Height
- 26 Dock Doors
- 3 Ramp to Grade Doors
 - (2) ±12' x ±14'
 - (1) ±22' x ±14'
- ±190' Truck Court Depth
- ±52' x ±58' Typical Column Spacing
- ±60' Speed Bay
- ±952' x ±292' Building Dimensions
- 39 Trailer Parking Spaces
- 129 Car Parking Spaces
- 4 Potential Offices
- Gated Truck Court
- 6,000 Amps, 277/480V 3 Phase

±2,986 SF NEC Spec Office



- Dock Doors
- ▲ Grade Level Doors ±12' x ±14'
- △ Grade Level Doors ±22' x ±14'



PAT FEENEY | Executive Vice President | o: 602 735 5530 | c: 602 538 3257 | pat.feeneey@cbre.com

DAN CALIHAN | Executive Vice President | o: 602 735 5677 | c: 602 617 1546 | dan.calihan@cbre.com

TYLER VOWELS | Vice President | o: 602 735 5524 | c: 231 384 1079 | tyler.vowels@cbre.com

Trammell Crow Company

CBRE

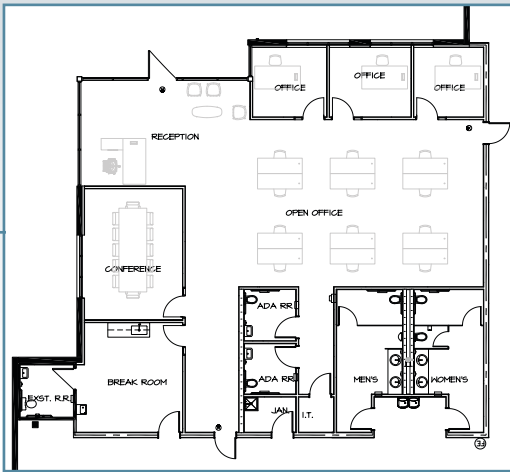
BUILDING C - ±262,912 SF

3800 S. Cotton Lane, Goodyear AZ

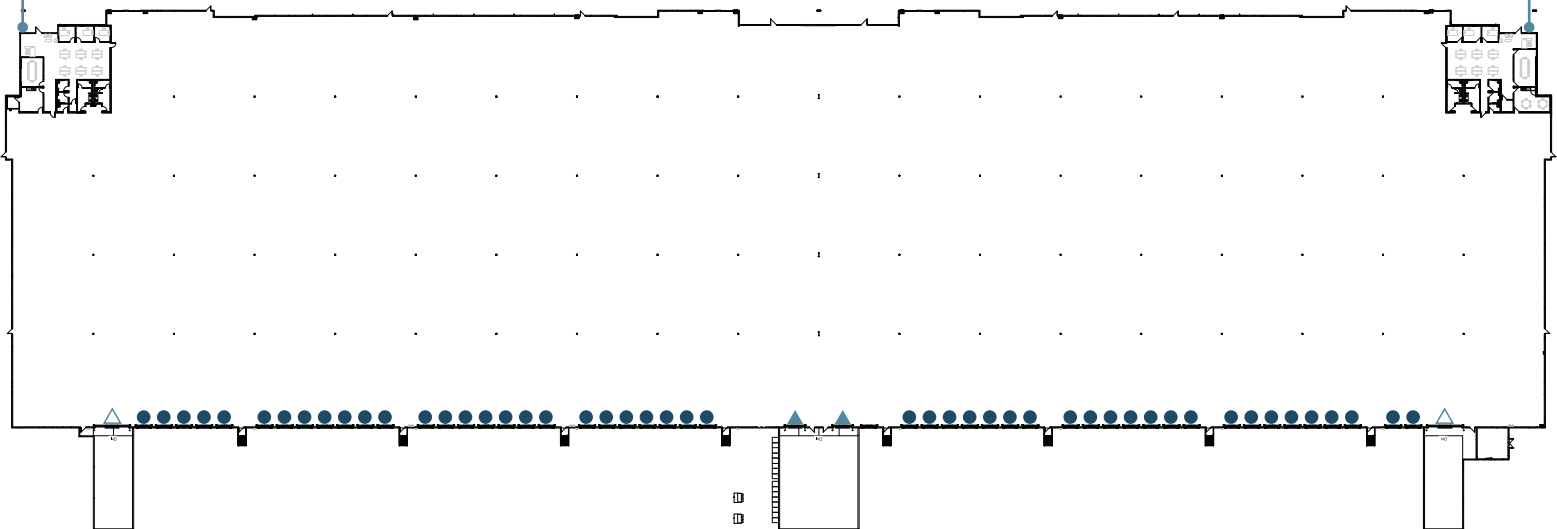
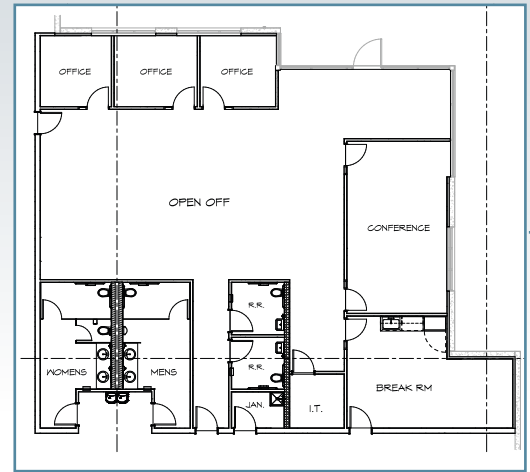


- Divisible to ±50,000 SF
- ±36' Clear Height
- 50 Dock Doors
- 4 Ramp to Grade Doors
 - (2) ±12' x ±14'
 - (2) ±22' x ±14'
- ±190' Truck Court Depth
- ±52' x ±51' Typical Column Spacing
- ±988' x ±264' Building Dimensions
- 34 Trailer Parking Spaces
- 301 Car Parking Spaces
- 4 Potential Offices
- Gated Truck Court
- 6,000 Amps, 277/480V 3 Phase

±3,120 SF NEC Spec Office



±3,001 SF SEC Spec Office



● Dock Doors ▲ Grade Level Doors ±12' x ±14' △ Grade Level Doors ±22' x ±14'

