

FOR LEASE

1375 EXPOSITION BLVD

**MOVE-IN
READY**
OFFICE SUITES

**\$1.00/SF Bonus +
5% Commission**
**FOR PROCURING
BROKERS!***

**Minimum 5-year lease term.*

TONY WHITTAKER
+1 916 492 6914
TONY.WHITTAKER@CBRE.COM
LIC. 01780828

JASON GOFF
+1 916 446 8222
JASON.GOFF@CBRE.COM
LIC. 01205230

NELLIE CRUZ
+1 916 492 6915
NELLIE.CRUZ@CBRE.COM
LIC. 02086140

SACRAMENTO, CA



**JACKSON
PROPERTIES**

CBRE

PROPERTY HIGHLIGHTS



Enhanced Security Measures



New, Move-in Ready Suites Available



Common Conference Room with AV Technology
(incl. 75" Sharp Commercial Monitor with Logitech MeetUp VC Bar)



Fitness Center



Walking Distance to Numerous Retail and Restaurant Amenities



Easy Access to Interstate 80 and Highways 50 & 160



Abundant Free Parking

AVAILABLE SUITES



**MOVE-IN
READY
OFFICE SUITES**

FLOOR / SUITE	SPACE AVAILABLE	RENT
2 ND - 220	±1,778-10,855 RSF	\$2.15 FS
2 ND - 240	±3,487-10,855 RSF	\$1.95 FS
2 ND - 250	±1,554-10,855 RSF	\$2.15 FS
3 RD - 310	±4,458 RSF	\$2.15 FS

TAKE VIRTUAL TOUR
CLICK HERE



2ND FLOOR PLAN

Suites 220/240/250

- Suite 220: $\pm 1,778$ RSF
- Suite 240: $\pm 3,487$ RSF
- Suite 250: $\pm 1,554$ - $5,590$ RSF

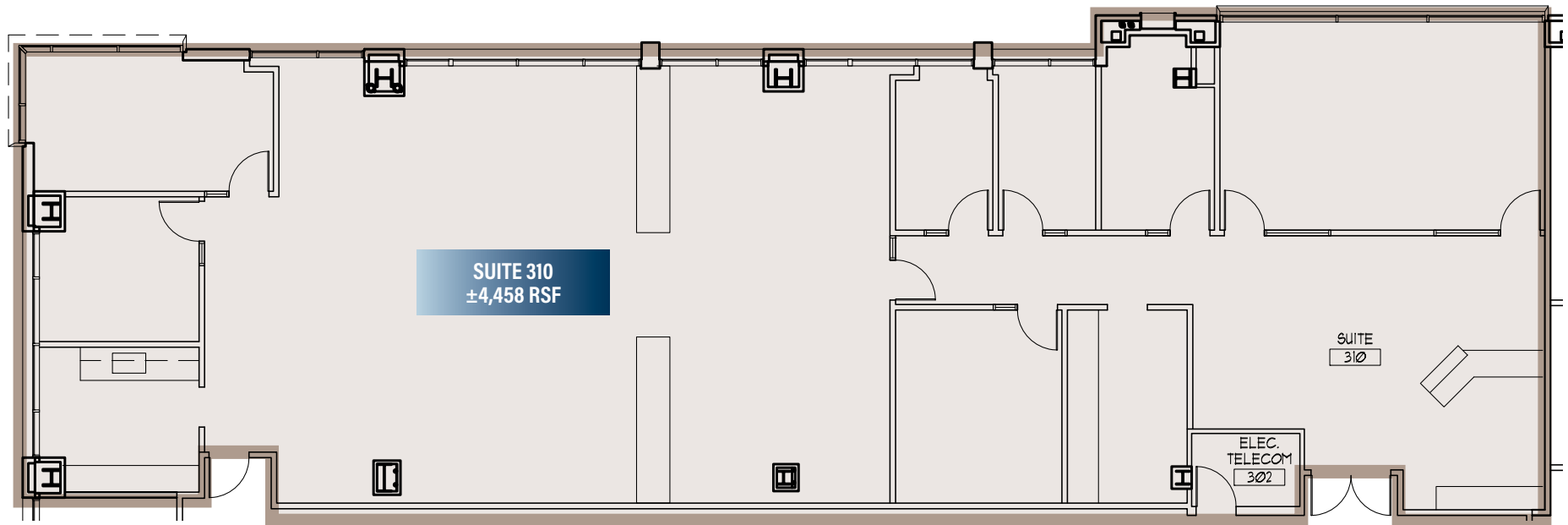
Total Available
 $\pm 1,554$ - $10,855$ RSF



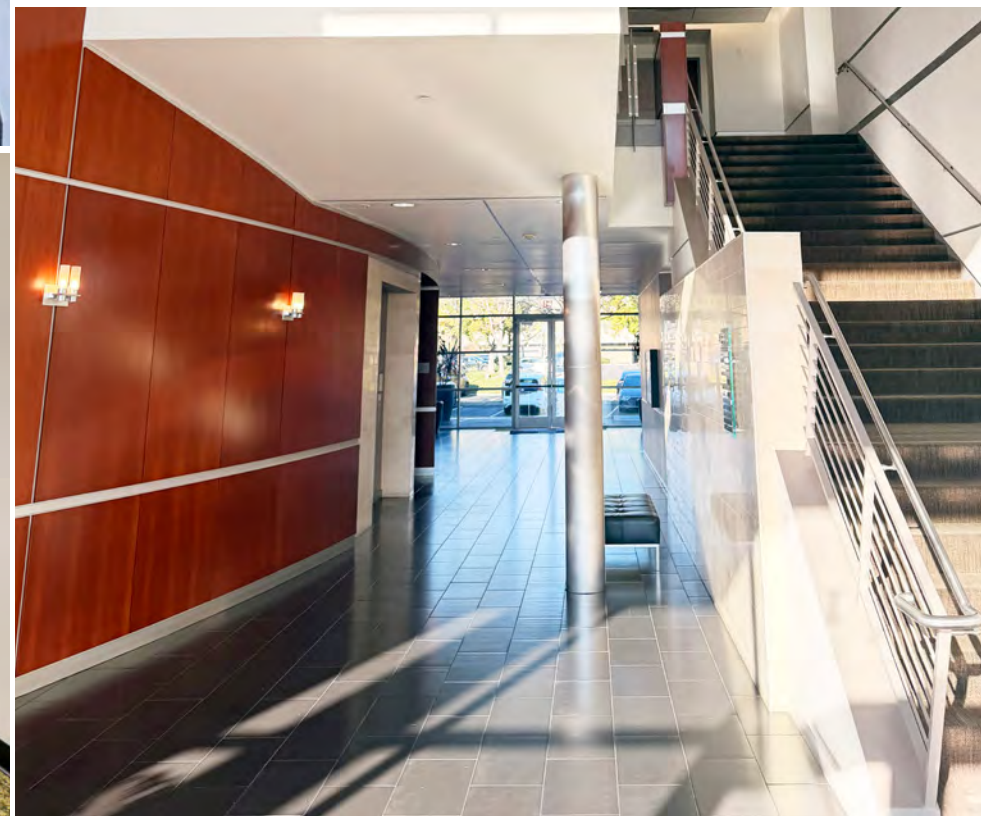
3RD FLOOR PLAN

Suite 310

Available
±4,458 RSF



ALL MEASUREMENTS ARE APPROXIMATE.



FOOD



RETAIL



DRINKS



**1375
EXPOSITION BLVD**

AREA AMENITIES

1. Arden Fair Mall

Macy's
BJ's Restaurant
Banana Republic
Lululemon
Bath & Body Works
Foot Locker
Lenscrafters

2. Market Square

Peet's Coffee
Ulta Beauty
Barnes & Noble
Mikuni
California Pizza Kitchen
The Cheesecake Factory
Best Buy

3. Point West Plaza

Hobby Lobby
Famous Footwear
Petco
Old Navy
Olive Garden
California Bank & Trust

4. Alta Arden Expwy

In-N-Out
Mimi's Café
Chick-fil-A
World Market

5. Arden Way

Chili's Grill
IHOP
Buffalo Wild Wings
Total Wine
McDonald's
Chipotle

6. Howe 'Bout Arden

Applebee's
The Container Store
HomeGoods
Nordstrom Rack
Century Theatres
Jamba Juice
Michaels
Burlington
MOD Pizza
Pinkberry Frozen Yogurt

SACRAMENTO, CA

1375 EXPOSITION BLVD



CONTACTS

TONY WHITTAKER

SENIOR VICE PRESIDENT

+1 916 492 6914

TONY.WHITTAKER@CBRE.COM

LIC. 01780828

JASON GOFF

EXECUTIVE VICE PRESIDENT

+1 916 446 8222

JASON.GOFF@CBRE.COM

LIC. 01205230

NELLIE CRUZ

VICE PRESIDENT

+1 916 492 6915

NELLIE.CRUZ@CBRE.COM

LIC. 02086140

© 2026 CBRE, Inc. All rights reserved. This information has been obtained from sources believed reliable, but has not been verified for accuracy or completeness. You should conduct a careful, independent investigation of the property and verify all information. Any reliance on this information is solely at your own risk. CBRE and the CBRE logo are service marks of CBRE, Inc. All other marks displayed on this document are the property of their respective owners, and the use of such logos does not imply any affiliation with or endorsement of CBRE. Photos herein are the property of their respective owners. Use of these images without the express written consent of the owner is prohibited.PMStudio_March2026

WWW.CBRE.COM/SACRAMENTO



JACKSON
PROPERTIES

CBRE