

FOR LEASE

# 1375 EXPOSITION BLVD

SACRAMENTO, CA

**MOVE-IN  
READY**  
OFFICE SUITES

**\$1.00/SF Bonus +  
5% Commission**  
FOR PROCURING  
BROKERS!\*

*\*Minimum 5-year lease term.*

**TONY WHITTAKER**  
+1 916 492 6914  
TONY.WHITTAKER@CBRE.COM  
LIC. 01780828

**JASON GOFF**  
+1 916 446 8222  
JASON.GOFF@CBRE.COM  
LIC. 01205230

**NELLIE CRUZ**  
+1 916 492 6915  
NELLIE.CRUZ@CBRE.COM  
LIC. 02086140

**HAYDEN NABERS**  
+1 916 446 8207  
HAYDEN.NABERS@CBRE.COM  
LIC. 02231233

 **JACKSON  
PROPERTIES**

**CBRE**

# PROPERTY HIGHLIGHTS



Enhanced Security Measures



New, Move-in Ready Suites Available



Common Conference Room with AV Technology  
(incl. 75" Sharp Commercial Monitor with Logitech MeetUp VC Bar)



Fitness Center



Walking Distance to Numerous Retail and Restaurant Amenities



Easy Access to Interstate 80 and Highways 50 & 160



Abundant Free Parking

# AVAILABLE SUITES



**MOVE-IN  
READY  
OFFICE SUITES**

FLOOR / SUITE	SPACE AVAILABLE	RENT	
2 <sup>ND</sup> - 230*	±3,908 RSF	\$1.95 FS	
2 <sup>ND</sup> - 240*	±3,487 RSF	\$1.95 FS	<a href="#">TAKE VIRTUAL TOUR CLICK HERE</a> 
2 <sup>ND</sup> - 250*	±5,590 RSF	\$2.15 FS	
3 <sup>RD</sup> - 310	±4,458 RSF	\$2.15 FS	

\*Contiguous for ±12,985 RSF

# 2ND FLOOR PLAN

## Suites 230/240/250

- Suite 230: ±3,908 RSF
- Suite 240: ±3,487 RSF
- Suite 250: ±5,590 RSF

**Total Available**  
±1,554-12,985 RSF



ALL MEASUREMENTS ARE APPROXIMATE.

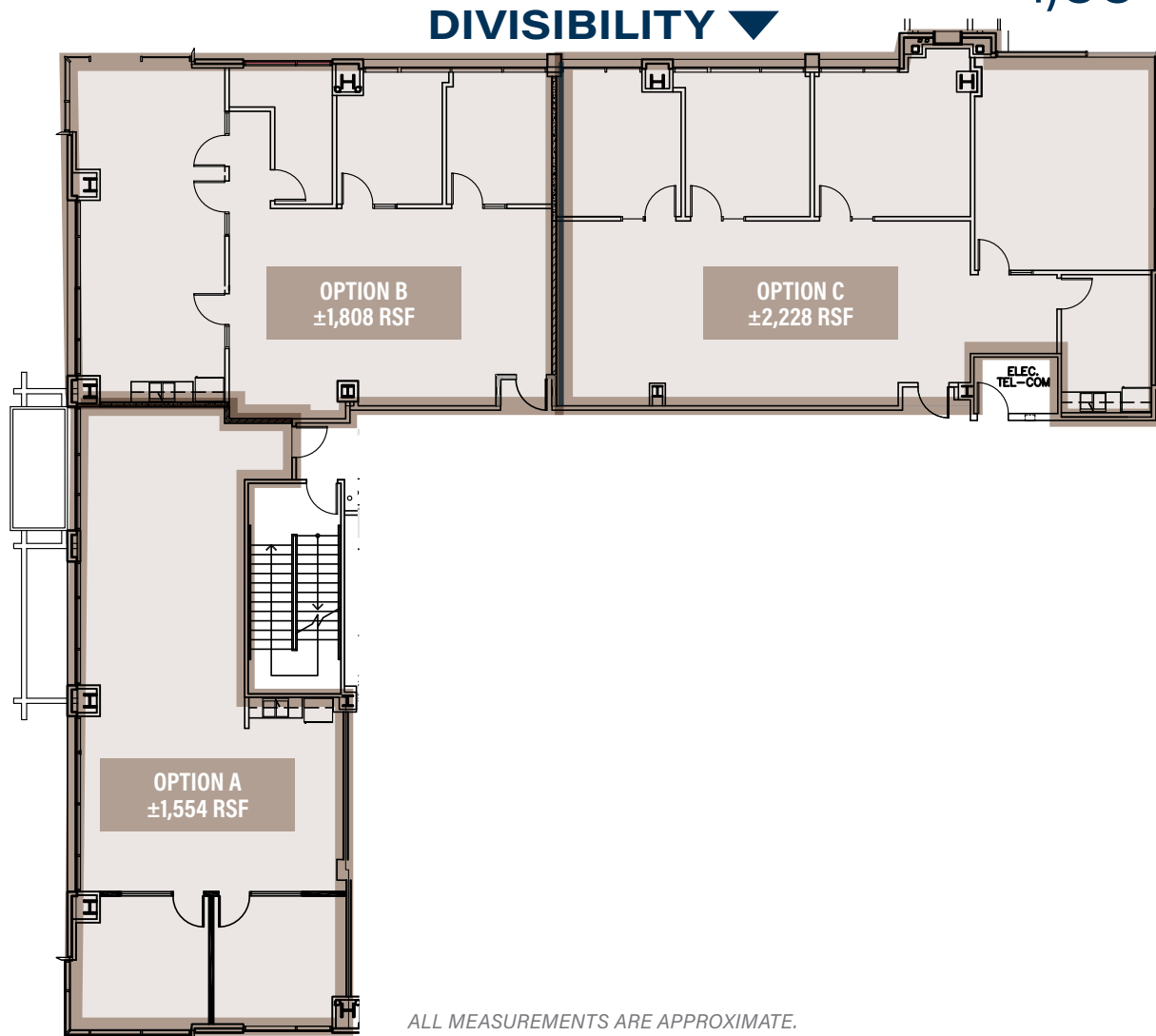
**TAKE VIRTUAL TOUR**  
CLICK HERE 

# 2ND FLOOR PLAN

## Suite 250

- Option A:  $\pm 1,554$  RSF
- Option B:  $\pm 1,808$  RSF
- Option C:  $\pm 2,228$  RSF

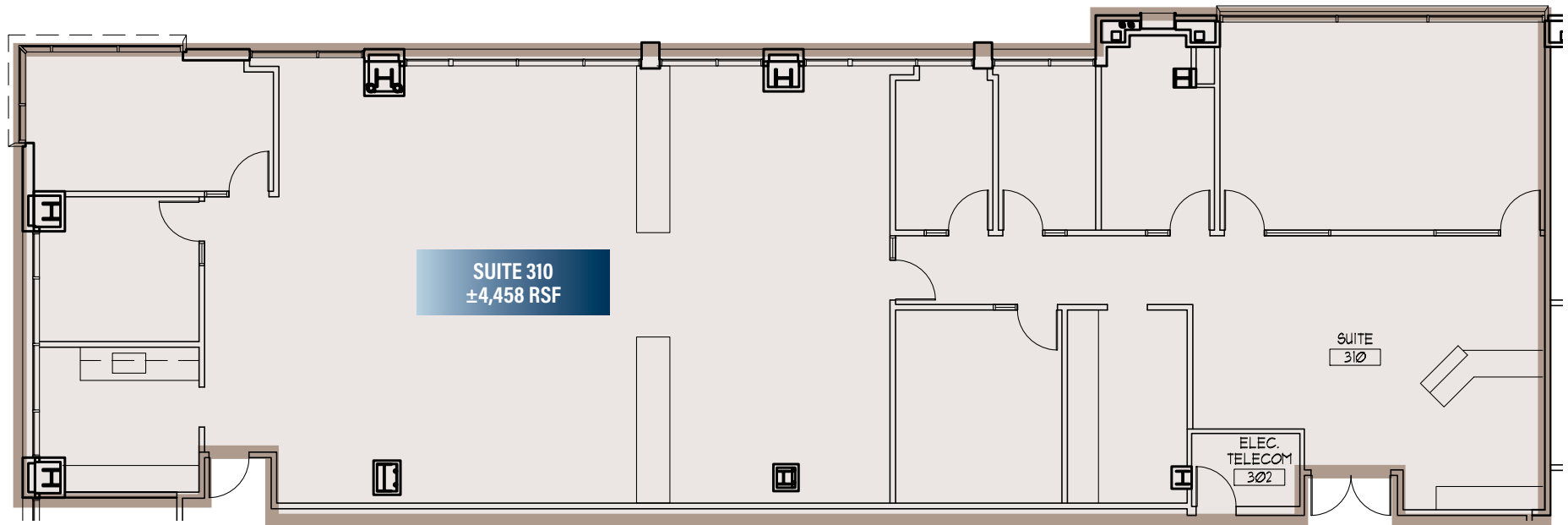
**Total Available**  
 $\pm 1,554 - 5,590$  RSF



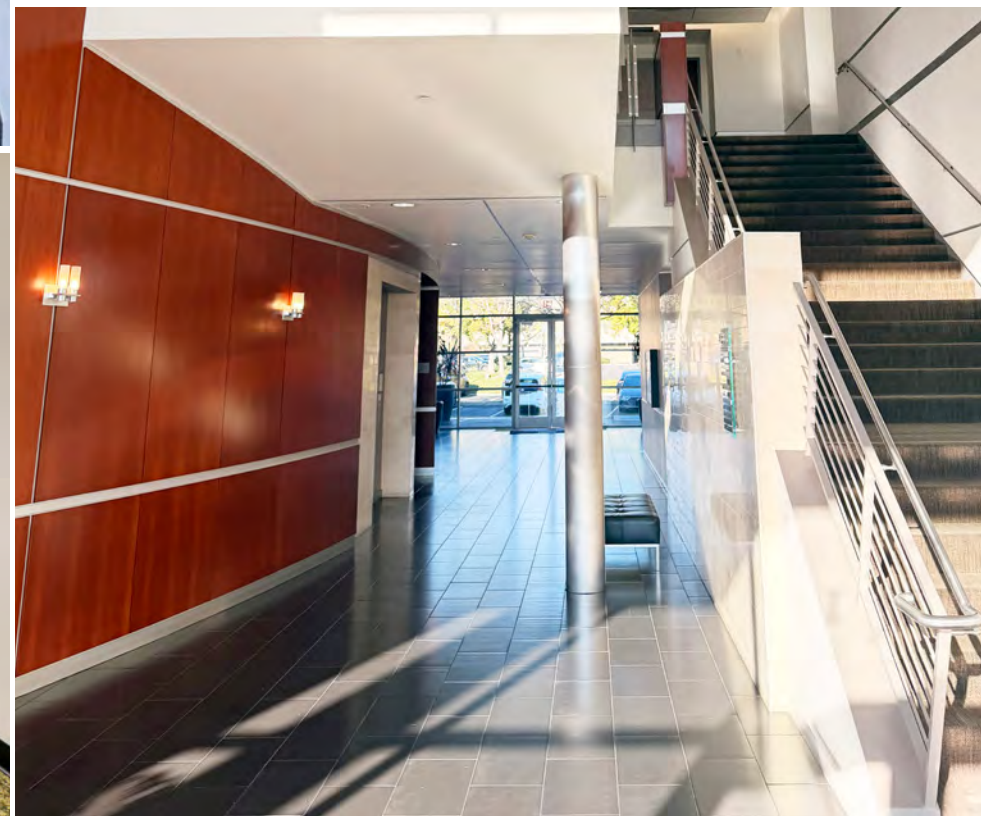
# 3RD FLOOR PLAN

## Suite 310

Available  
±4,458 RSF



ALL MEASUREMENTS ARE APPROXIMATE.



FOOD



RETAIL



DRINKS



**1375  
EXPOSITION BLVD**

## AREA AMENITIES

### 1. Arden Fair Mall

Macy's  
BJ's Restaurant  
Banana Republic  
Lululemon  
Bath & Body Works  
Foot Locker  
Lenscrafters

### 2. Market Square

Peet's Coffee  
Ulta Beauty  
Barnes & Noble  
Mikuni  
California Pizza Kitchen  
The Cheesecake Factory  
Best Buy

### 3. Point West Plaza

Hobby Lobby  
Famous Footwear  
Petco  
Old Navy  
Olive Garden  
California Bank & Trust

### 4. Alta Arden Expwy

In-N-Out  
Mimi's Café  
Chick-fil-A  
World Market

### 5. Arden Way

Chili's Grill  
IHOP  
Buffalo Wild Wings  
Total Wine  
McDonald's  
Chipotle

### 6. Howe 'Bout Arden

Applebee's  
The Container Store  
HomeGoods  
Nordstrom Rack  
Century Theatres  
Jamba Juice  
Michaels  
Burlington  
MOD Pizza  
Pinkberry Frozen Yogurt

SACRAMENTO, CA

# 1375 EXPOSITION BLVD



## CONTACTS

**TONY WHITTAKER**

SENIOR VICE PRESIDENT

+1 916 492 6914

TONY.WHITTAKER@CBRE.COM

LIC. 01780828

**JASON GOFF**

EXECUTIVE VICE PRESIDENT

+1 916 446 8222

JASON.GOFF@CBRE.COM

LIC. 01205230

**HAYDEN NABERS**

ASSOCIATE

+1 916 446 8207

HAYDEN.NABERS@CBRE.COM

LIC. 02231233

**NELLIE CRUZ**

VICE PRESIDENT

+1 916 492 6915

NELLIE.CRUZ@CBRE.COM

LIC. 02086140

© 2026 CBRE, Inc. All rights reserved. This information has been obtained from sources believed reliable, but has not been verified for accuracy or completeness. You should conduct a careful, independent investigation of the property and verify all information. Any reliance on this information is solely at your own risk. CBRE and the CBRE logo are service marks of CBRE, Inc. All other marks displayed on this document are the property of their respective owners, and the use of such logos does not imply any affiliation with or endorsement of CBRE. Photos herein are the property of their respective owners. Use of these images without the express written consent of the owner is prohibited.PMStudio\_June2026

[WWW.CBRE.COM/SACRAMENTO](http://WWW.CBRE.COM/SACRAMENTO)

