

# 3336 BRADSHAW ROAD

SACRAMENTO, CA

\$1.55 PSF, FULL SERVICE  
**FOR LEASE**

PROJECT HAS UNDERGONE EXTENSIVE RENOVATION



CBRE

# PROPERTY HIGHLIGHTS



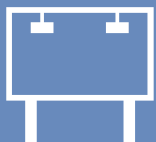
Newly Renovated  
Building Exterior  
and Common Areas



Safe and  
Secure Office  
Environment



Move-In Ready  
Suites w/  
Direct Access



Monument  
Signage  
Available



Surrounded by  
Restaurants and  
Professional Amenities



0.1 Miles from  
Highway 50  
On/Off Ramps

**FOR LEASE**

3336 BRADSHAW ROAD SACRAMENTO, CA



SITE PHOTOS



FOR LEASE

3336 BRADSHAW ROAD SACRAMENTO, CA

# AVAILABLE SUITES

SUITE#

SIZE

155

±2,145 SF

315\*

±1,000-2,241 SF

\*Divisible

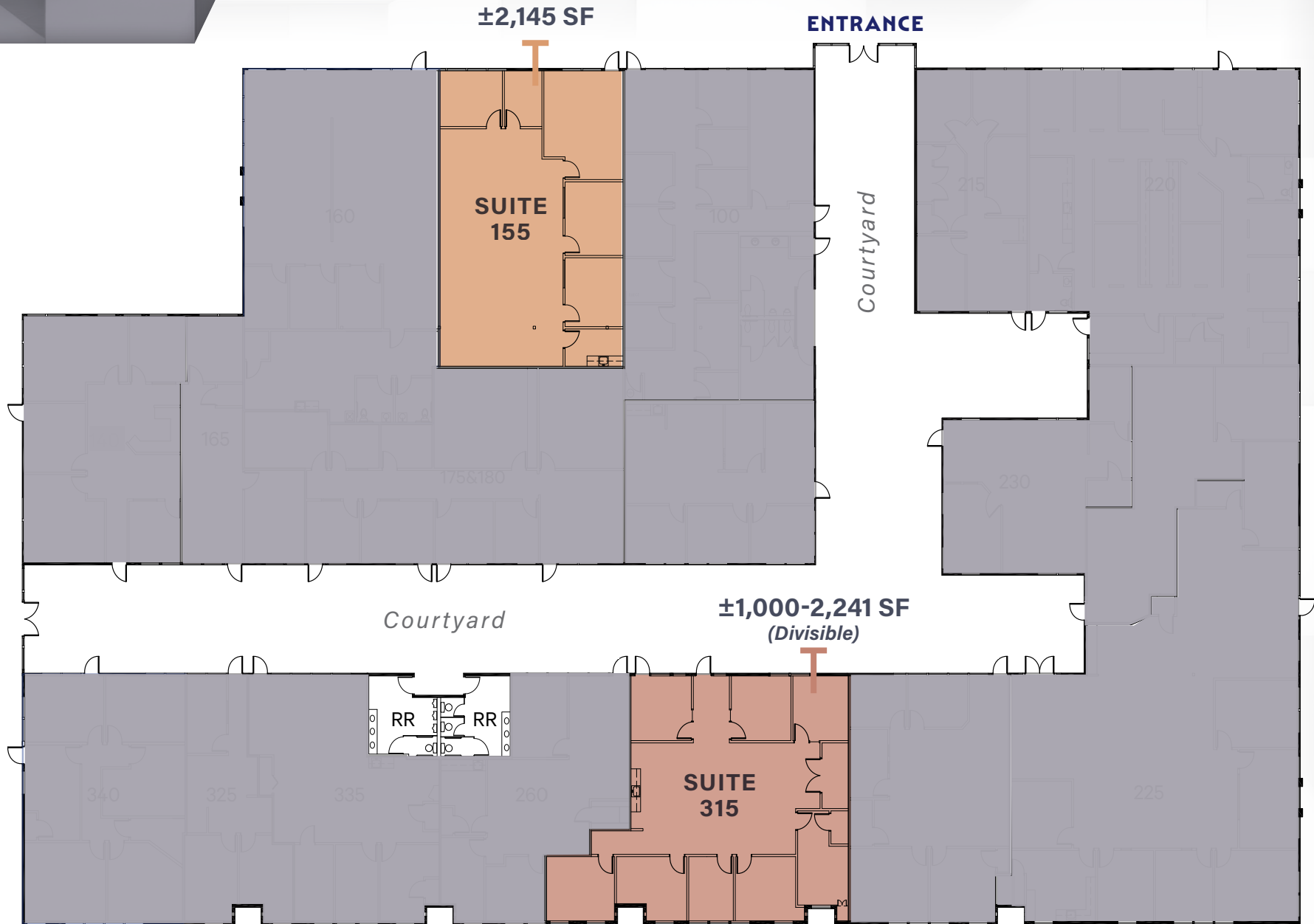


FOR LEASE

3336 BRADSHAW ROAD SACRAMENTO, CA

# FLOOR PLAN

## AVAILABILITY - ±1,000 - 2,241 SF





SITE PHOTOS



FOR LEASE

3336 BRADSHAW ROAD SACRAMENTO, CA



SUITE PHOTOS



# NEARBY AMENITIES



RESTAURANTS



SHOPPING

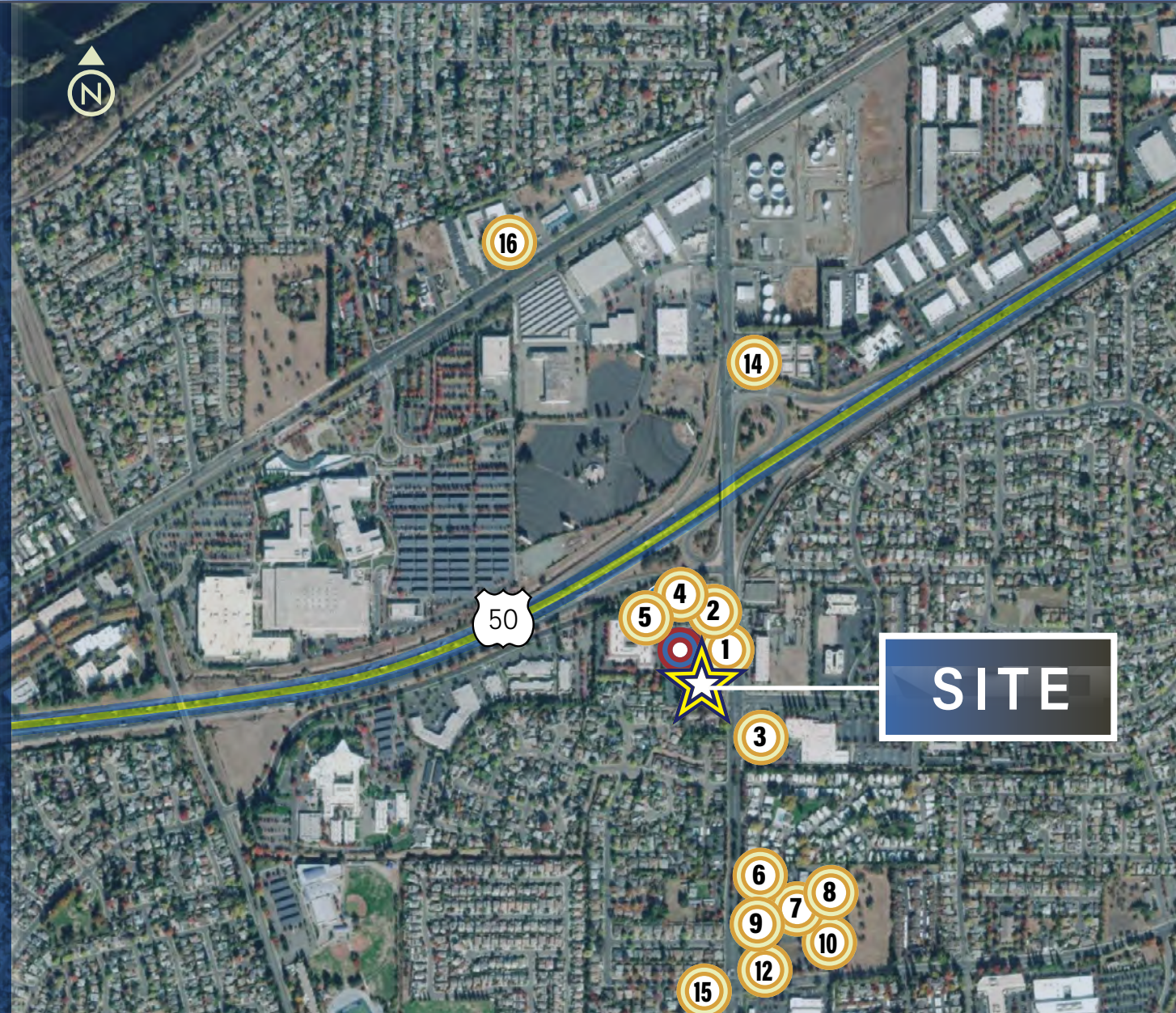


DRINKS

## BRADVILLE SQUARE

- Grocery Outlet
- Dollar Tree
- Planet Fitness
- O'Reilly
- AutoZone
- Mountain Mike's
- Burger King
- Subway
- I Love Teriyaki
- Bradshaw Donuts
- Dreams Tea
- Song Pa
- Check Into Cash
- Hair It Is
- Elegant Nail
- Smoke Shack
- Metro PCS
- UPS Store

- |                  |                     |
|------------------|---------------------|
| 1. El Pollo Loco | 9. KFC              |
| 2. Chevron       | 10. Papa Murphy's   |
| 3. Taco Bell     | 11. Weinerschnitzel |
| 4. Huckleberry's | 12. Shell           |
| 5. Carl's Jr.    | 13. Jack in the Box |
| 6. IHOP          | 14. Chevron         |
| 7. Starbucks     | 15. McDonald's      |
| 8. Food 4 Less   | 16. Domino's Pizza  |



**SITE**

FOR LEASE

3336 BRADSHAW ROAD SACRAMENTO, CA

# 3336 BRADSHAW ROAD

SACRAMENTO, CA



**FOR MORE INFORMATION, PLEASE CONTACT:**

**[WWW.CBRE.COM/SACRAMENTO](http://WWW.CBRE.COM/SACRAMENTO)**

**TONY WHITTAKER**  
Senior Vice President  
+1 916 492 6914  
tony.whittaker@cbre.com  
Lic. 01780828

**NELLIE CRUZ**  
Vice President  
+1 916 492 6915  
nellie.cruz@cbre.com  
Lic. 02086140

**HAYDEN NABERS**  
Associate  
+1 916 446 8207  
hayden.nabers@cbre.com  
Lic. 02231233

© 2026 CBRE, Inc. All rights reserved. This information has been obtained from sources believed reliable, but has not been verified for accuracy or completeness. You should conduct a careful, independent investigation of the property and verify all information. Any reliance on this information is solely at your own risk. CBRE and the CBRE logo are service marks of CBRE, Inc. All other marks displayed on this document are the property of their respective owners, and the use of such logos does not imply any affiliation with or endorsement of CBRE. Photos herein are the property of their respective owners. Use of these images without the express written consent of the owner is prohibited.PMStudio\_May2026

**CBRE**