

SOUTHPOINT

COMMERCE CENTER

812 & 820 Antioch Church Road
Greenville, SC 29605

Up to ±130,400 SF Available Warehouse / Flex Space



Trey Pennington, SIOR
Vice Chairman
+1 864 293 9757
trey.pennington@cbre.com

Jeff Benedict, SIOR
First Vice President
+1 864 414 0641
jeff.benedict@cbre.com

Tripp Speaks
Associate
+1 803 669 2434
tripp.speaks@cbre.com



Boyett Properties Inc.

CBRE

Park Rendering



Construction Progress

SOUTHPOINT
COMMERCE CENTER



Boyett Properties Inc.

CBRE

Site Plan



Building D Specs



25,200 SF



1,800 SF Office



100' x 190'



40' x 30' Columns



28' Clear



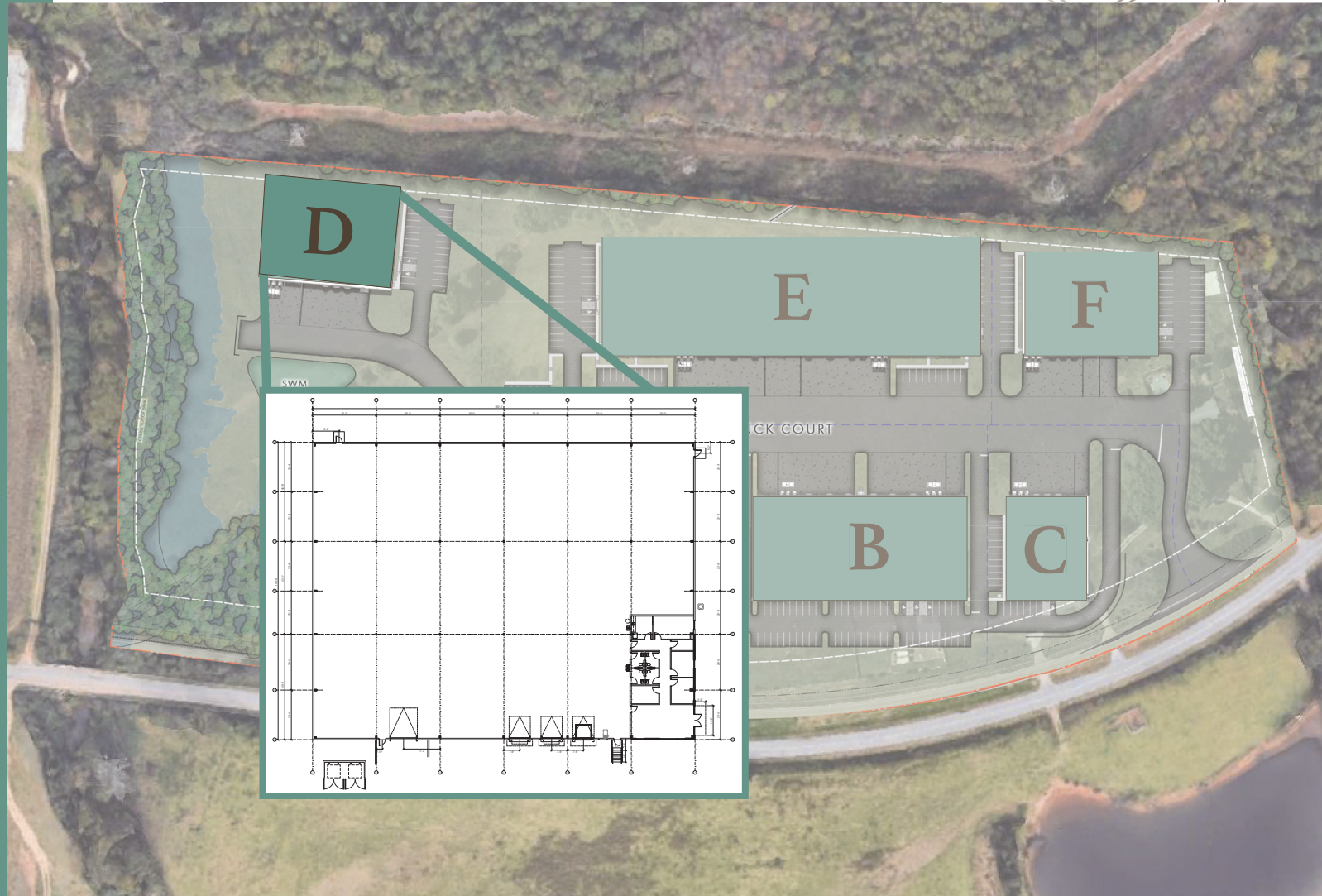
3 Dock Doors



1 Drive-In Door



43 Parking Spaces



Building E Specs

Under Construction, Q4 2026 Delivery



80,000 SF



3,600 SF Office



160' x 500'



46.8' x 30' Columns



32' Clear



8 Dock Doors



2 Drive-In Doors



78 Parking Spaces



Building F Specs

SOUTHPOINT
COMMERCE CENTER

Under Construction, Q4 2026 Delivery



25,200 SF



1,800 SF Office



140' x 180'



40' x 28' Columns



28' Clear



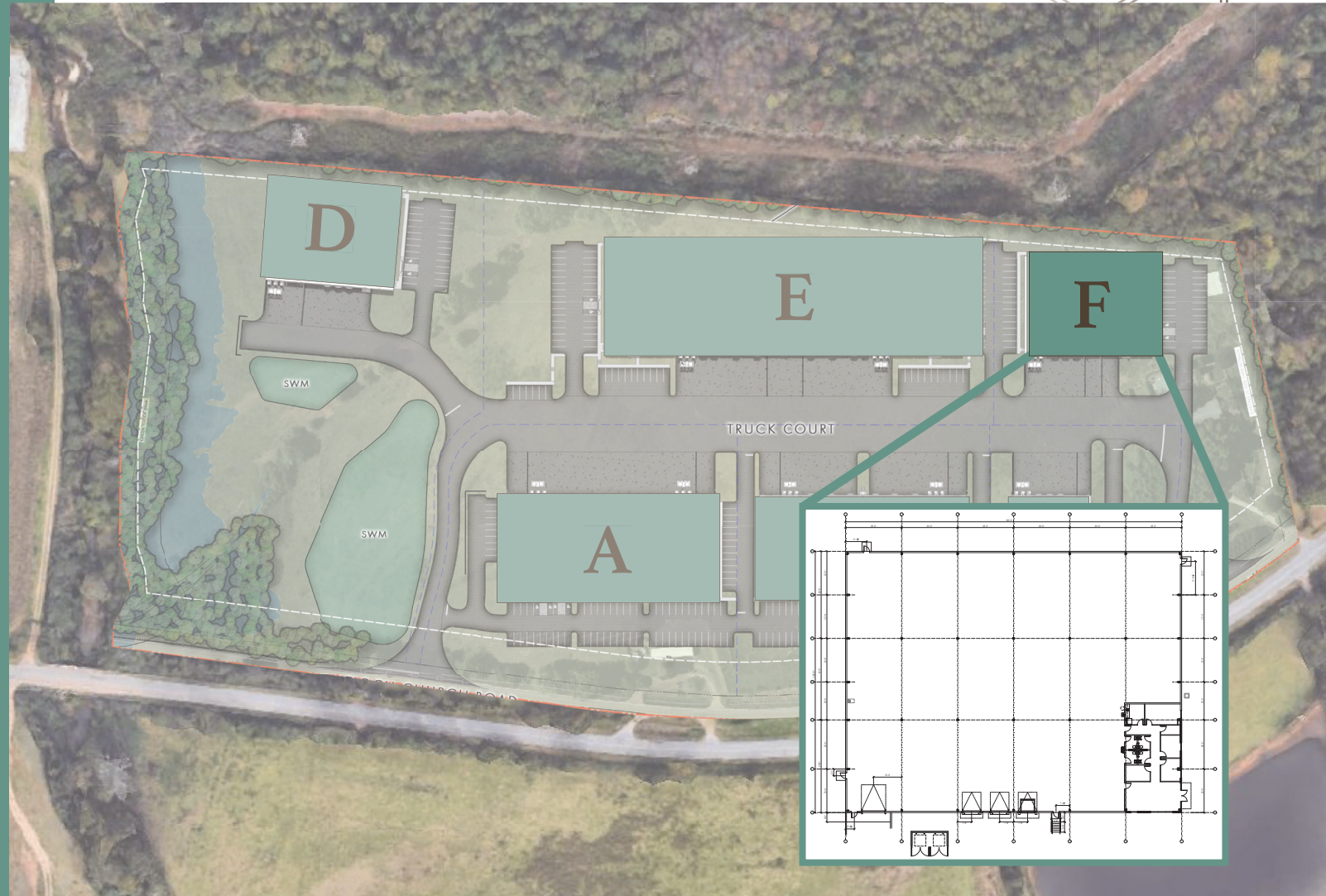
3 Dock Doors



1 Drive-In Door



27 Parking Spaces

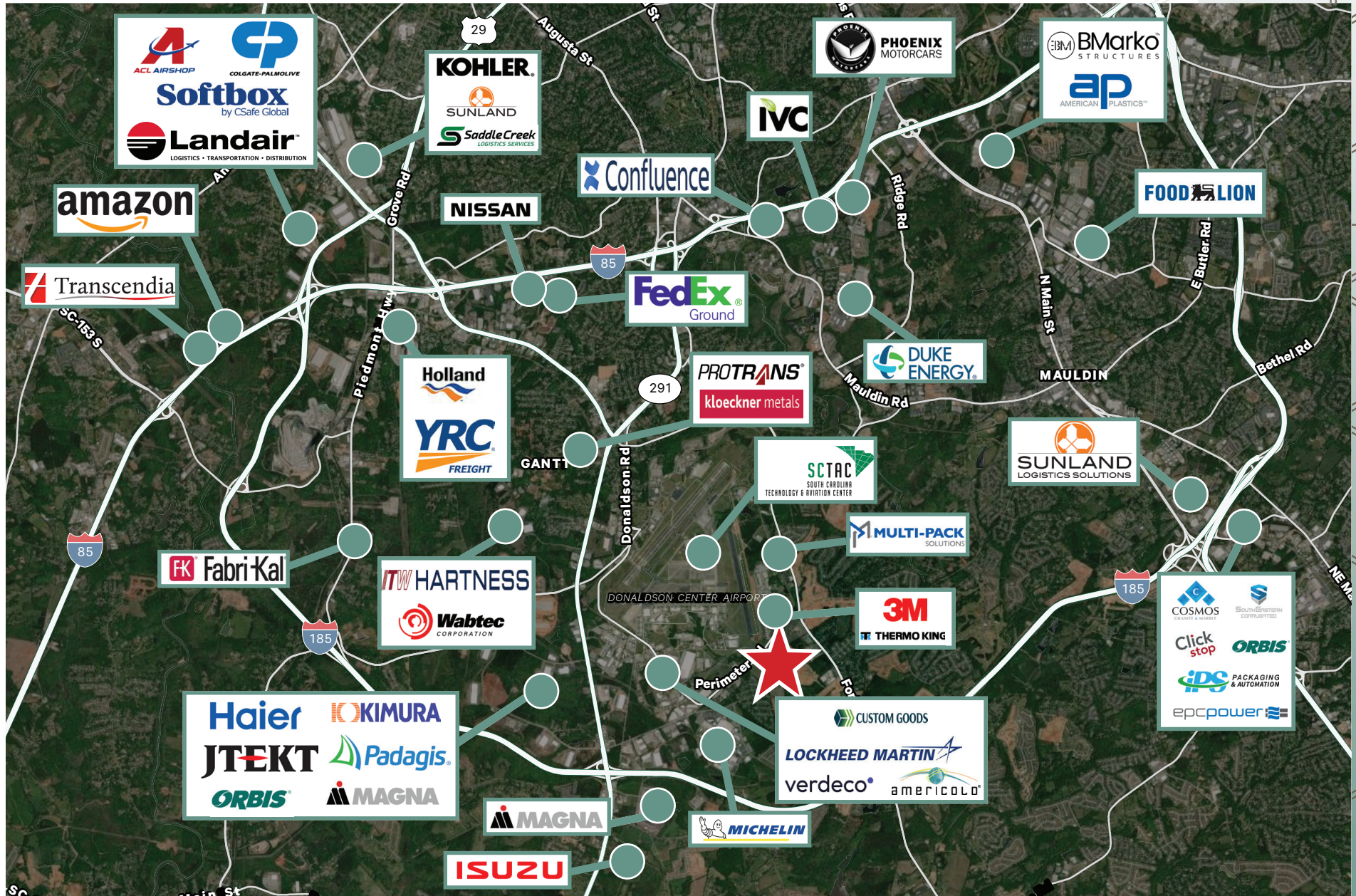


CBRE



Boyett Properties Inc.

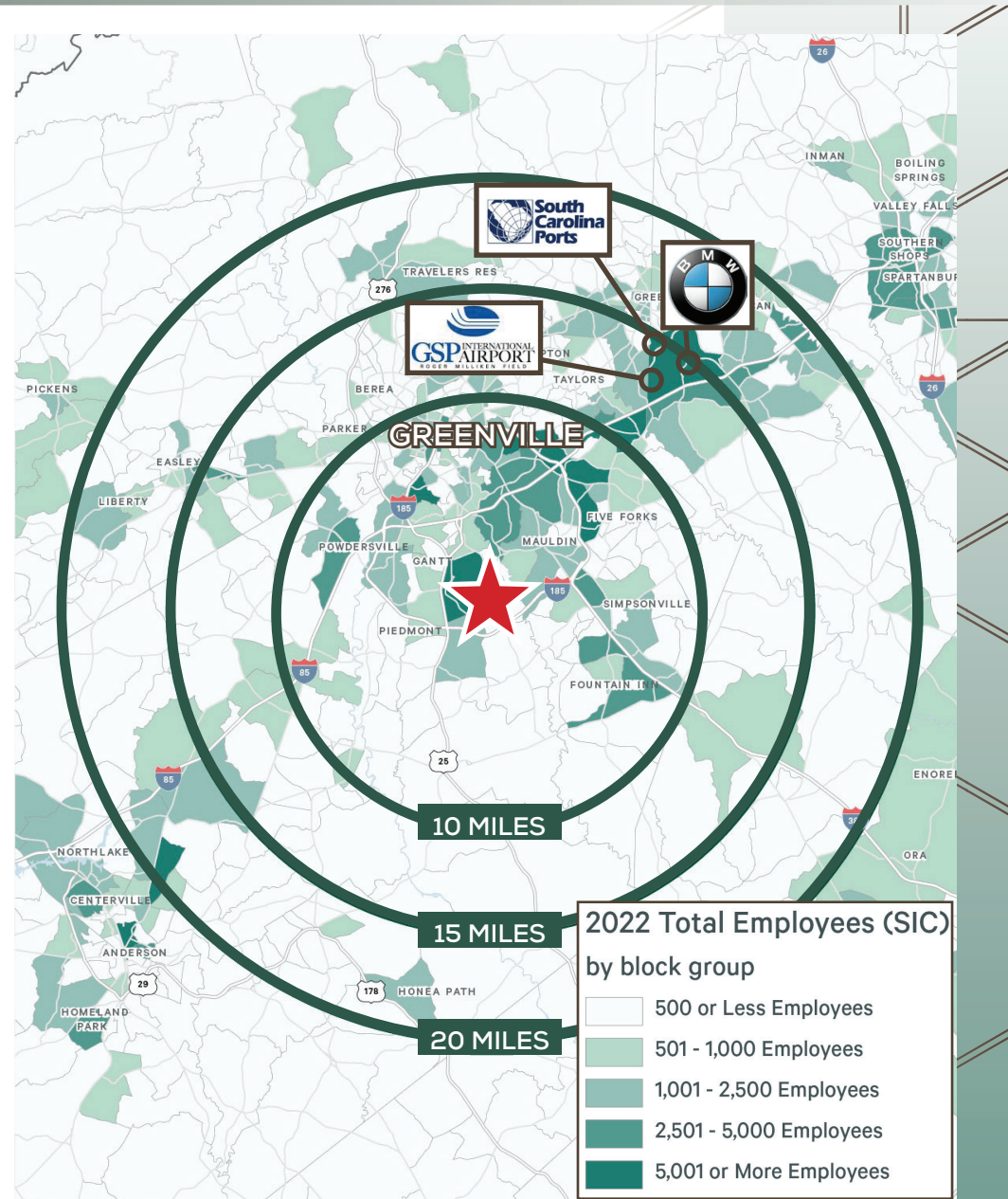
Users In Market



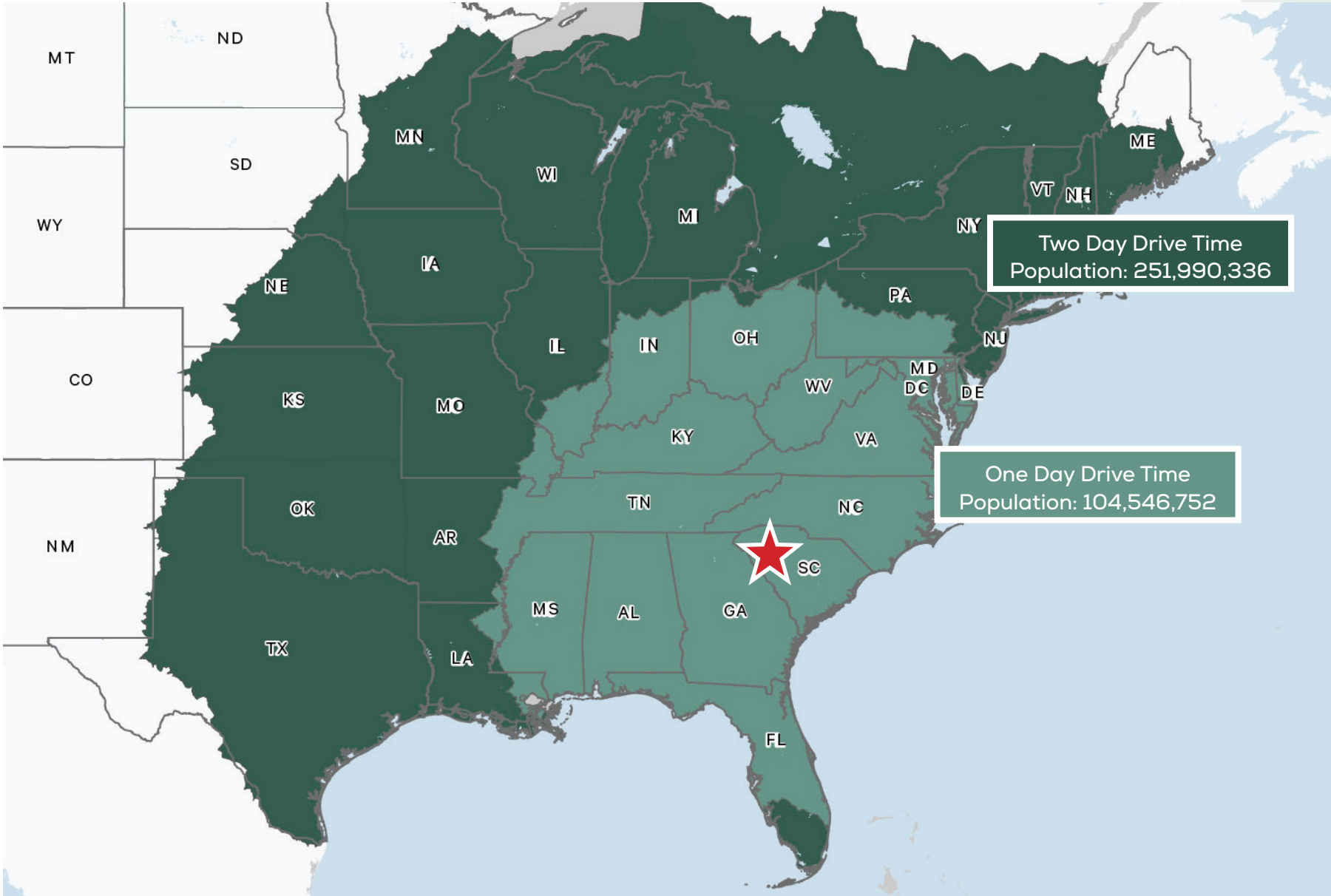
Location Map & Demographics

LOCATION	DISTANCE
I-185	1.1 Miles
Donaldson Airport	3.4 Miles
I-385	5.1 Miles
I-85	5.3 Miles
Downtown Greenville	8.4 Miles
GSP Airport	16.8 Miles
BMW	19.2 Miles
SC Inland Port	23.8 Miles

	10 MILES	15 MILES	20 MILES
Population	345,738	582,275	764,849
Daytime Population	400,402	622,243	782,753
Businesses	14,346	20,313	24,946
Labor Force	176,102	297,337	378,715
Bachelor's Degree or Higher	63,116	101,873	126,017
Avg HH Income	\$103,666	\$100,891	\$97,052



Drive-Time Map





© 2026 CBRE, Inc. All rights reserved. This information has been obtained from sources believed reliable but has not been verified for accuracy or completeness. CBRE, Inc. makes no guarantee, representation or warranty and accepts no responsibility or liability as to the accuracy, completeness, or reliability of the information contained herein. You should conduct a careful, independent investigation of the property and verify all information. Any reliance on this information is solely at your own risk.