
400 East Wisconsin Avenue

Milwaukee, WI 53202



Curry Pierce Building

400 E Wisconsin Ave | Milwaukee, WI 53202

For Lease



PROPERTY FEATURES



On-Site Parking



Architectural Detail

Stunning historic details such as Cream City brick



Downtown Location

At the corner of Milwaukee Street and Wisconsin Avenue



Amenity-Rich Area

Proximity to numerous restaurants and retail shops

Curry Pierce Building

Downtown Office Space

Constructed in 1866 and regularly and meticulously updated since its full redevelopment in 1993, the 22,000 square foot Curry Pierce Building contains a mixture of office and retail uses.

This five story historic office building overlooks Wisconsin Avenue and is directly on the Milwaukee Hop street car line. The location provides easy access to Interstate 43 and Interstate 94, and is in walking distance to Milwaukee Public Market, the Third Ward, and Milwaukee's Lakefront.

Lease Rate

\$18.75/SF Modified Gross

Available Space

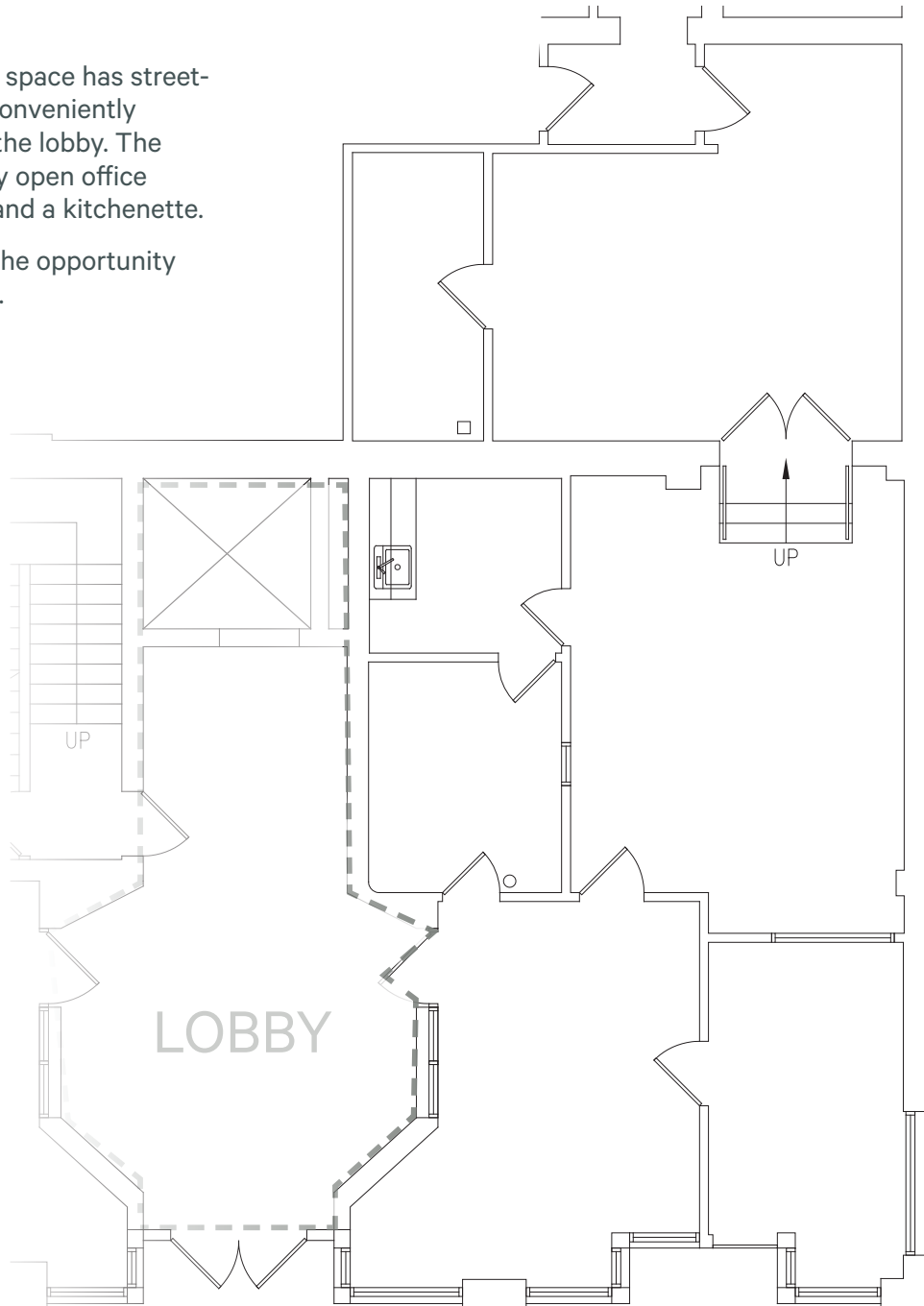
First Floor

Suite 102

1,410 RSF

This first floor office space has street-level access and is conveniently located adjacent to the lobby. The suite includes mostly open office space, an IT closet, and a kitchenette.

This suite provides the opportunity for **building signage**.



Available Space

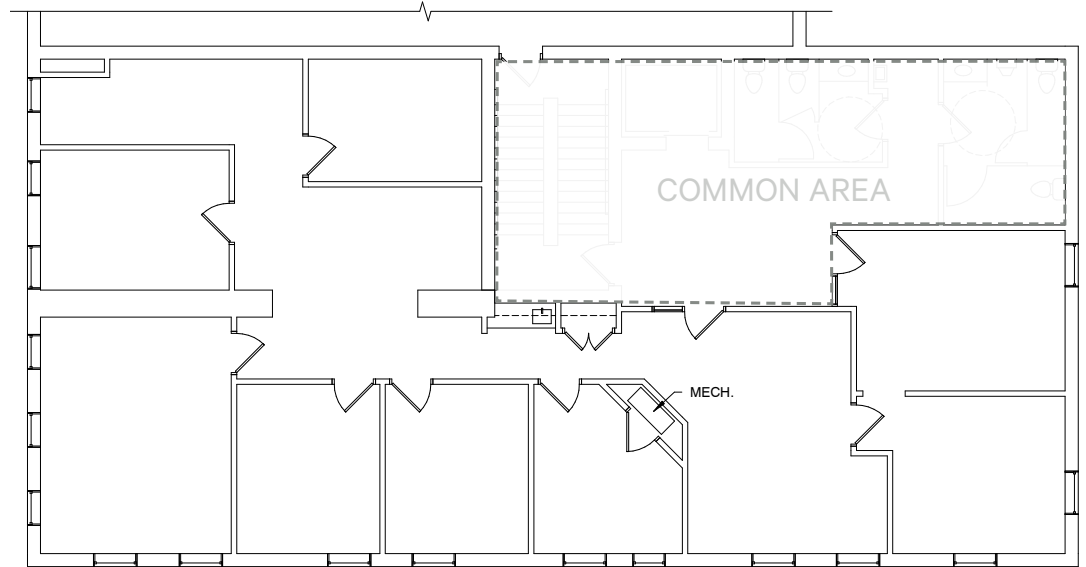
Third Floor

Suite 300

2,528 RSF

Full Floor

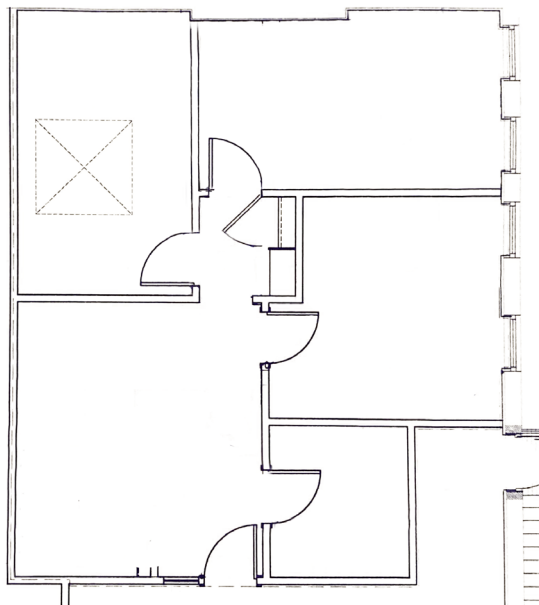
The space includes several private offices and kitchenette



Suite 340A

929 RSF

The space includes a large reception area, two private offices, conference room with large skylight



Available Space

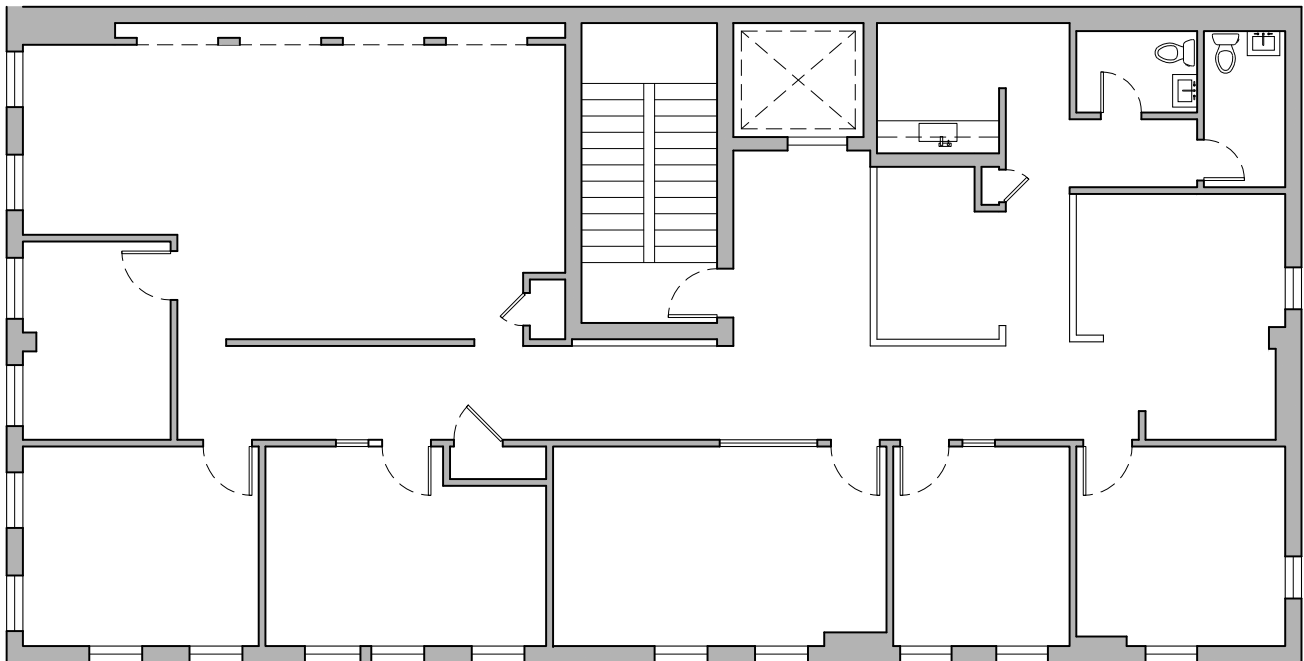
Fourth Floor

Suite 400

3,043 RSF

Full, Private Floor

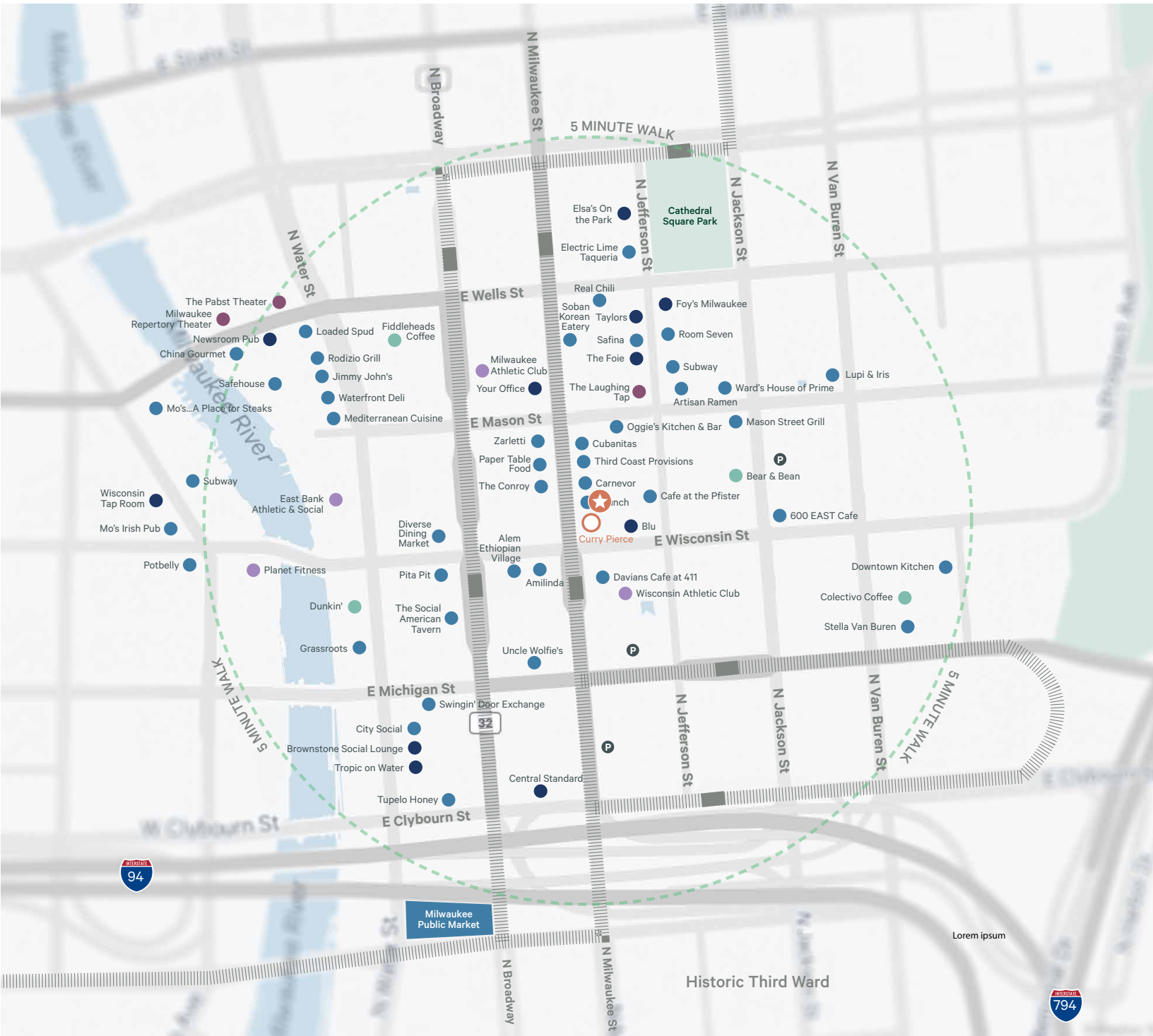
The space includes in-suite restrooms, large private offices, conference room and kitchenette.



Downtown Milwaukee

Amenity Map

- ★ 400 E Wisconsin Avenue
- Food
- Drinks
- Coffee
- Fitness
- Entertainment
- ||||| The Hop Streetcar Line



Lorem ipsum



Curry Pierce Building

400 E Wisconsin Ave | Milwaukee, WI 53202

For Lease



Suite 300

Contact Us

John Mazza

Senior Vice President

+1 414 274 1627

john.mazza@cbre.com

Galileo Hughes

Associate

+ 1 414 274 1656

galileo.hughes@cbre.com

Colin Ryan

Associate

+1 414 526 7272

colin.ryan2@cbre.com

© 2026 CBRE, Inc. All rights reserved. This information has been obtained from sources believed reliable, but has not been verified for accuracy or completeness. You should conduct a careful, independent investigation of the property and verify all information. Any reliance on this information is solely at your own risk. CBRE and the CBRE logo are service marks of CBRE, Inc. All other marks displayed on this document are the property of their respective owners, and the use of such logos does not imply any affiliation with or endorsement of CBRE. Photos herein are the property of their respective owners. Use of these images without the express written consent of the owner is prohibited.

State of Wisconsin Broker Disclosure

To Non-Residential Customers

Wisconsin Law requires all real estate licensees to give the following information about brokerage services to prospective customers.

Prior to negotiating on your behalf the Broker must provide you the following disclosure statement:

Broker Disclosure to Customers

You are the customer of the broker. The broker is either an agent of another party in the transaction or a subagent of another broker who is the agent of another party in the transaction. The broker, or a salesperson acting on the behalf of the broker, may provide brokerage services to you. Whenever the broker is providing brokerage services to you, the broker owes you, the customer the following duties:

- The duty to provide brokerage services to you fairly and honestly.
- The duty to exercise reasonable skill and care in providing brokerage services to you.
- The duty to provide you with accurate information about market conditions within a reasonable time if you request it, unless disclosure of the information is prohibited by law.
- The duty to disclose to you in writing certain material adverse facts about a property, unless disclosure of the information is prohibited by law (see "Definition of Material Adverse Facts" below).
- The duty to protect your confidentiality. Unless the law requires it, the broker will not disclose your confidential information of other parties.
- The duty to safeguard trust funds and other property the broker holds.
- The duty, when negotiating, to present contract proposals in an objective & unbiased manner and disclose the advantages and disadvantages of the proposals.

Please review this information carefully. A broker or salesperson can answer your questions about brokerage services, but if you need legal advice, tax advice, or a professional home inspection, contact an attorney, tax advisor, or home inspector. This disclosure is required by section 452.135 of the Wisconsin Statutes and is for information only. It is a plain language summary of a broker's duties to a customer under section 452.133(I) of the Wisconsin Statutes.

Confidentiality Notice to Customers

Broker will keep confidential any information given to broker in confidence, or any information obtained by broker that he or she knows a reasonable person would want to be kept confidential by law, or authorize the broker to disclose particular information. A broker shall continue to keep the information confidential after broker is no longer providing brokerage services to you.

The following information is required to be disclosed by law.

1. Material adverse facts, as defined in section 452.01(5g) of the Wisconsin statutes (see "definition of material adverse facts" below).
2. Any facts known by the broker that contradict any information included in a written inspection report on the property or real estate that is the subject of the transaction. To ensure that the broker is aware of what specific information below. At a later time, you may also provide the broker with other information that you consider to be confidential.

CONFIDENTIAL INFORMATION: _____

NON-CONFIDENTIAL INFORMATION (The following information may be disclosed by Broker): _____

(Insert information you authorize to broker to disclose such as financial qualification information)

Consent to Telephone Solicitation

I/We agree that the Broker and any affiliated settlement service providers (for example, a mortgage company or title company) may call our/my home or cell phone numbers regarding issues, goods and services related to the real estate transaction until I/ we withdraw this consent in writing.

List Home/Cell Numbers: _____

Sex Offender Registry

Notice: You may obtain information about the sex offender registry and persons registered with the registry by contacting the Wisconsin Department of Corrections on the Internet at <http://offender.doc.state.wi.us/public/> or by phone at (608)240-5830.

<http://offender.doc.state.wi.us/public/> or by phone at (608)240-5830.

Definition of Material Adverse Facts

A "material adverse fact" is defined in Wis. Stat. 452.01 (5g) as an adverse fact that a party indicates is of such significance, or that is generally recognized by a competent licensee as being of such significance to a reasonable party that it affects or would affect the party's decision to enter into a contract or agreement concerning a transaction or affects or would affect the party's decision about the terms of such a contract or agreement. An "adverse fact" is defined in Wis. Stat. 452.01 (1e) as a condition or occurrence that a competent licensee generally recognizes will significantly adversely affect the value of the property, significantly reduce the structural integrity of improvements to real estate, or present a significant health risk to occupants of the property, or information that indicates that a party to a transaction is not able to or does not intend to meet his or her obligations under a contract or agreement made concerning the transaction.

No representation is made as to the legal validity of any provision or the adequacy of any provision on any specific transaction.